



MAKING GREAT HOCKEY HAPPEN

A LIFELONG LOVE OF HOCKEY

WELLINGTON HOCKEY ASSOCIATION

ANNUAL REPORT 2019

THANK YOU TO OUR SPONSORS AND FUNDERS



SPORTING EDGE



REPORTS

Governance
CEO
Wellington Regional Stadium Trust
Tribute to Rex Manning

COMMUNITY HOCKEY

Programmes
Small Sticks in Schools
Athlete and Coach Development
Umpire Development
Summer Hockey
Master's Hockey
Hutt Valley Sub-Association

REPRESENTATIVE TEAMS

Under 18 Men and Women
Under 15 Boys and Girls
Under 13 Boys and Girls
Representative Umpires

RESULTS AND TEAMS

Small Sticks
Secondary
Open Grade

ACKNOWLEDGMENTS

National Team Honours
National Under 21's
National Under 18's
National Masters

HOCKEY AWARDS

Wellington Hockey Awards
Sport Wellington Awards

CAPITAL REPORTS

Under 18 Men
Under 18 Women
Under 21 Men
Under 21 Women
NHL Men
NHL Women

FINANCIAL PERFORMANCE

Wellington Hockey Association
Wellington Regional Stadium Trust

ADMINISTRATION

Life Members
Staff
Custodians
Advisory Councils

CONTENTS





INSPIRING A LIFELONG LOVE OF HOCKEY

GOVERNANCE REPORT

Sally Morrison - Chair WHA Board

This 2019 Annual Report will contain the second Wellington Hockey Association Governance report in accordance with the Sport New Zealand Governance guidance.

The Board of Wellington Hockey must provide structures and decision-making processes that serve us well today and protect, guide and ensure we can provide meaningful services into the future. The Board must take responsibility for our direction and for our key financial and strategic decisions. The Board must also be a critical friend to our CEO.

My personal thanks are extended to several hard-working people. 2019 has been the year of concerted, determined effort by a number of individuals who all had the same goal in mind - the WHA recovery.

By March 2019 the organisation was on its knees. Karen Wallace had worked tirelessly over the month of January when she took over from Kit Taylor as acting CEO. She worked closely with FINDEX (WHA's outsourced financial management providers) to get to the bottom of its financial position. In February, Rachel Minton-Smith joined us on secondment from Hockey New Zealand and took the reins, did the impossible in stewarding us through the Audit and the next few months. But it was in March that she contacted me overnight with a concern that she could not see a way through the year according to the budget she had.

This was primarily because it was in March that FINDEX, with Karen's help, had finally been able to get to the bottom of WHA's financial position - the organisation was \$400,000 in debt (inclusive of the overdraft). I called an emergency meeting and challenged the Board asking whether we were trading recklessly. Three key things then occurred; Karen Wallace negotiated with Wellington City Council a significant cost relief package, Mark Jurgeleit stepped forward and said his company would be able to raise \$35,000 in a charity golf tournament and Keith Binnie, Wellington Regional Hockey Stadium Trust (WRHST) Chair pledged relief from Trust payments if the situation continued. With these three developments and the permanent recruitment of the CEO halted the budget, indicated a way through and the Board made the decision to continue trading.

Peter Drew emerged from the recruitment process for the CEO as the applicant who was willing to take on a six month contract and he joined us in June. We are grateful for the hard work Rachel did as she not only worked every hour of the day delivering Hockey, she was a significant part of the organisation getting through 2019 - thank you.

Peter then stewarded WHA for the next six months with the support of Karen Wallace, Danella Rennie, who did hundreds of hours of work on invoices, debt collection and the accounts, and of course our staff and volunteers who needed to deliver a season with a much-reduced capacity.

In December Peter secured a permanent role in Dunedin, his home-town, and he left WHA in a much better position than he had found it. Thank you Peter for your hard work in difficult circumstances.

We then welcomed onboard our fifth CEO for the year; Raechel Cummins former director at PwC and CFO for a large group of privately held companies. She is currently a Director of the Rowing New Zealand Board, and also sits on the Rowing New Zealand Audit, Finance, Risk and Compliance Committee. Raechel had recently joined WHA's Finance and Risk Committee as our 'virtual CFO' a role that constitutes a set number of hours a month and will take over from FINDEX in March to provide WHA's Financial Management and oversight. This pro-active role is a step forward for WHA as we move away being from the 'ambulance at the bottom of the cliff' that a Financial Management Company provides. Raechel very generously offered to act as CEO for the month of December and into January at a much reduced rate - tantamount to charity. With Karen Wallace (the saviour of WHA) she has worked very hard to draw up and deliver the business of WHA and the all-important 2020 budget. This budget reflects a bottom up, granular approach to each line of WHA's business and has had the staff contribute to each of their areas. It gives the Board and organisation absolute clarity on our financial position and plans. It sets us up robustly for this year and several years to come.

Despite the difficult nature of 2019, there were also some outstanding successes, which are referred to in this Report - I want to talk specifically about the live streaming and highlights packages generated. From the new WHA MyActionReplay cameras and technology now installed at the NHS. During the Under- 18 National Tournament this technology reached over 70,000 views over the week, which is an incredible range for an age-group tournament. Our thanks again to Mark Jurgeleit and his team for facilitating, generating and supporting so much of this. Our thanks too to McDonalds Newtown for their support during the tournament. This is an excellent capability that we can now leverage into the future.

GOVERNANCE REPORT CONTINUED

Strategy and Risk

In 2019 it was a priority of the Board and WRSHT to gain clarity on the next three years- it is vitally important that the organisation is focused on the agreed priorities of our game and the needs of our customers and members. The WHA Strategy development was contributed to from across our community, our thanks to Rachel Lilley for facilitating this.

Here is why we are here, what we will do as an organisation and how we will do it 2020- 2022:

Vision: *Inspiring a life-long love of Hockey*

Mission: *Making great hockey happen*

Outcome Statements:

Strategy Statement:

WHA is a strong, sustainable, transparent and professional organisation with good governance, strong financial management and clear priorities.

WHA is a trusted, reliable community partner. We are here to support our community.

Our Values

Hockey Whanau

We put people at the centre of our purpose, treating everyone, always, with care and respect. We're a family, a whanau, a team and a community.

Enjoyment

We love hockey and enjoy our involvement in the sport. We have fun and want others to have fun, to ensure a quality hockey experience.

Integrity

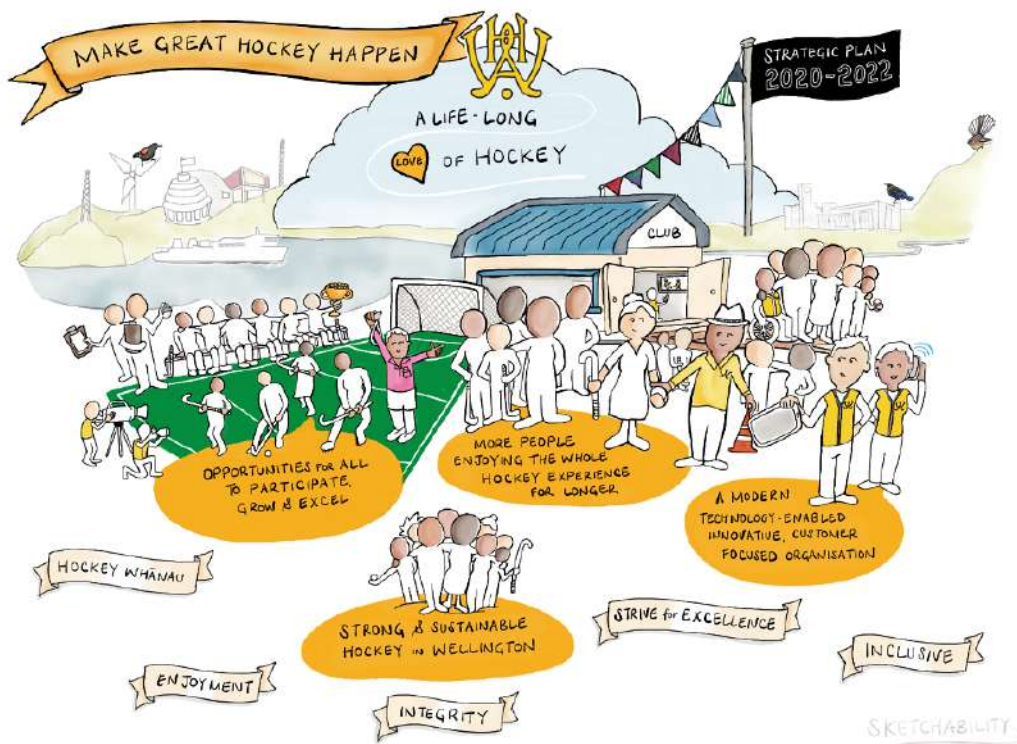
We're honest and truthful in dealing with others. We are open, transparent and real. We take responsibility for our words and actions and hold each other accountable.

Strive for Excellence

We bring our passion and commitment to the sport of hockey, and its people. We always strive for excellence and take genuine pride in everything we do and how we do it.

Inclusive

We can achieve so much more together, when we are united. We share our knowledge and successes, so everyone achieves more.



GOVERNANCE REPORT CONTINUED

Standards and Policies

The WHA Board Governance Subcommittee is committed to building an organisation that is sustainable and doing this through good governance. Appropriate guidance and policies must be in place for this to be a reality and this Board is now in a strong position with the majority of the organisations policies now in place and on file ready for ongoing review by the Board and staff.

Gratitude

The CEO report in this Report is a fuller account of the year and our undertakings as a business and success on the Turf.

The Board do however want to take this opportunity to acknowledge the passion and commitment of the many hockey administrators, players, volunteers, supporters, officials, governors and enthusiasts. Without you, this sport which we celebrate so much, would not exist here in Wellington: thank you. We want to acknowledge too our many partnerships with, for example Hockey New Zealand, our fellow associations, our commercial friends, notably the support of Brian Drake, Ricoh, CCL, MyActionReplay, Kapiti, CUS and McDonalds Newtown and our many stakeholders such as our City Councils and the WRHST, each of whom contribute to the success of this game across the region.

Our game must reflect what our customer's want, what our communities feel they need and what we all want to celebrate. The Competitions' Environment Review that is planned in 2020 is a critical step toward better understanding the needs of our different stakeholders at their different stages. We need to challenge the status quo and respond with what our customers want. We are now in a debt-free position after a year of austerity but we cannot simply revert to what we have always done, we need to emerge from the determination of 2019 a better, more customer-centric, sustainable organisation.

At the end of 2019 we appointed Lisa Jones as our new full-time permanent CEO. Lisa has come to us after seven years as 2IC at Capital Football. We are hugely excited about what Lisa brings to WHA and for the future.

Lastly, I offer my deep thanks as Chair to the Board of Hockey Wellington to our Directors, President and the WRHST who have given many hundreds of hours of their time and therefore expertise to achieve what I have touched. We may be volunteers, but we are not amateurs.

Kyle Pontifex and Danella Rennie, our elected members, have worked countless hours for their community and are tireless in their commitment to Hockey in our Region. Rochelle Roddick has led the charge with Karen Wallace and then Raechel Cummins as we recover financially and establish sound processes to avoid the pitfalls of 2018. Susannah Sharpe joined us in April as an appointed Director along with John Thomason. Susannah has very generously given many hours of her legal expertise to the Board, and John his plethora of leadership experience. Derek Wilshere agreed to take on the mantle of President and as such now attends the Board meetings (by bus from Eastbourne) providing exceptional guidance. Sam French and Keith Binnie have attended as meetings representing the Trust and have ensured that the WHA Board and WRHST have worked closely and constructively together. Thank you.

At our last Board meeting in December Gareth Jeune, well-known club hockey man, joined us as well as Anna Rossiter-Stead (Aspiring Director) University student and former player. At this meeting Kyle reflected that he genuinely felt that the Board is in a positive place and that the people we have sitting around the table are outstanding. I agree.



Board Composition as at 31 December 2019



Sally Morrison: Chair

Sally joined the Wellington Hockey Board in August 2018 and was elected Chair shortly afterwards. She has been involved in Sports Governance or club administration in Wellington for 30 years and was a Director on the Cricket Wellington Board from 2009 and Chair from 2016 until her retirement in 2019. Sally has held senior leadership and strategy roles across the Public Sector. She has a Masters Degree in Strategic Studies (Dist) from Victoria University. In 2019 Sally was the recipient of the Sport Wellington Leadership award.



Kyle Pontifex: Deputy Chair

Having played 100 matches for Wellington/Capital NHL, and a 15-year international hockey career, Kyle has a wealth of high-performance knowledge and experience in the sport. Additionally, Kyle brings a strong business acumen and a strategic management approach gained from studies in Business Administration (MBA), and an 18-year professional career in technology and banking.



Danella Rennie: Director

Danella was elected as a club representative on the Board in 2016. A long-time member of our hockey community being just about to commence her 34th year of playing for her club Upper Hutt. Danella has been involved in all aspects of hockey over this time spending many years umpiring and mentoring umpires. She has previously been involved in coaching and was part of our Judicial Council and recently the Open Grade Council. She wants to be a voice for the clubs on the Board by ensuring that they are heard right to the top.



Rochelle Roddick: Director

Rochelle joined the Board in November 2018. She is a Partner in international accounting and business advisory firm, FINDEX, and has over 25 years' experience in advising businesses and not-for-profits. Rochelle has a Bachelor of Commerce and Administration from Victoria University of Wellington, is a chartered accountant (CA) and holds a certificate of public practice. She is also involved in sports coaching and administration.



John Thomason

John joined the Board in February 2019. A recent transplant from the United States, he has served on numerous charitable boards over several decades and across many service areas. John has held senior leadership roles in capital markets, banking, and the nonprofit sector. He is currently the COO of an independent school in Wellington. John has a Masters degree in Public Policy and an MBA, as well as a passion for hockey.

Susannah Sharpe



A member of the Board since 2018, Susannah holds a Masters of Business Administration (MBA) with distinction - including research into economics and system dynamics theory with a case study of emerging technology in electricity sector and regulation. She has considerable experience in the energy and infrastructure sectors, and is experienced in strategy and stakeholder engagement, regulatory/ legal and risk, business planning, internal assurance and compliance programmes. Susannah has a BA/LLB from Victoria University and is currently Regulatory Proposal Manager/Senior Counsel at Chorus.

Gareth Jeune



Gareth joined the Board in a co-opted role in December 2019. Having played hockey over the last 19 years, he has been connected to various committees during that time, including the reestablishment of Tawa Hockey Club over the last 5 years. He is interested in how WHA can best serve the hockey community and provide equal opportunities to the diversity that our communities represent. Additionally, Gareth brings 12 years' experience in Risk and Project Management.

Anna Rossiter-Stead (Aspiring Director)



Anna joined the Board in December 2019 as an Intern Director. She is currently in her last year of studying for a Bachelor of Commerce at Victoria University with a double major in Marketing and Commercial Law. Anna has grown up around hockey, representing Wairarapa twice and going on to captain her college team. Her focus is on developing how the Board communicates and engages with its community.

Meeting Attendance

Date	Sally Morrison	Kyle Pontifex	Danella Rennie	Rochelle Roddick	John Thomason	Susannah Sharpe	Gareth Jeune	Anna Rossiter-Stead
13 Feb	Y	Y	Y	Y	Y	Y		
24 March	Y	Y	Y	Y	Y	Y		
11 April	Y	Y	Y	Y	Y	Y		
6 June	Y	Y	Y	Y	Y	Y		
18 July	Y	Y	Y	N	Y	Y		
29 August	Y	Y	Y	Y	Y	N		
17 October	Y	Y	Y	Y	Y	Y		
28 Nov	Y	Y	Y	Y	Y	Y		
19 Dec	Y	Y	Y	N	Y	Y	Y	Y

Sub Committees

Subcommittees	Role	Membership
Finance and Risk Committee	Provide advice and assistance to the Board in relation to the efficient governance, financial and risk management of the organisation, the ethical behaviour and the overall performance of Wellington Hockey	Rochelle Roddick (Chair) Susannah Sharpe Sally Morrison Karen Wallace was a member of the F&R Committee for a period
Chief Executive Employment Committee	Assist the Board to ensure that there is an effective and positive partnership between the Board and its Chief Executive. Recruit the CEO and performance manage/ assess the CEO	Kyle Pontifex (Chair) Sally Morrison
Governance Committee	Assist the Board in discharging its responsibilities for the smooth functioning of the Board's systems, in particular, policy formation, recruitment, Board and director performance assessment, and professional development	Rochelle Roddick (Chair) Danella Rennie Sally Morrison
Councils Committee	Rejuvenate and support WHA Councils	Kyle Pontifex (Chair) Danella Rennie Gareth Jeune

Cost of governance

All Directors undertake their roles voluntarily. There are no other costs associated with Governance.

BoardPro the Board Software tool is provided free of charge very generously by BoardPro.

Appointment processes.

Please see Rules 9-13 of the Wellington Hockey Association Rules where this process is clearly set out.

Governance evaluation and performance

The Governance Committee has oversight of this important role.





CEO REPORT

Lisa Jones

I started my role as the CEO of Wellington Hockey in January 2020, following on from what can only be described as an unsettled 2019 for everyone involved in the Hockey Community.

I would like to thank the staff for their hard work through this difficult period, Dane Lett, Sandeep Choudary, Daan Jonjejan and Cat Gooding. Their dedication to Hockey over this time was greatly appreciated by all.

We also were lucky enough to be led through this period by a dedicated group of people who worked tirelessly to make sure the ship continued to sail, Karen Wallace, Rachel Minton-Smith, Peter Drew and Raechel Cummins. Our thanks for the significant amount of time and dedication you put into our sport.

We were delighted to welcome two new members to the team in 2019, Bjorn Dix as our Hockey Development Officer and Sue Parrott to Admin and Finance. They have both already made significant contributions to the team.

Our greatest thanks must go to our Hockey Community. The support you have shown everyone at Wellington Hockey has been very much appreciated and we are grateful to be part of such a supportive community.

To the Advisory Councils, our Board, the many volunteers who keep the clubs running, coaches and umpires, who have all put in countless hours to make our sport happen, thank you. Without your commitment and dedication our sport would not be what it is today, and we appreciate every minute of your time.

We finished the year on a high note with the start of the turf replacement on NHS1. The turf is the new Tokyo 2020 model, the first of its kind in New Zealand. It is the same one that will be used in the Olympic Games in 2020, and is made of 60% renewable materials, mostly sugar cane. Once the new light towers are complete, our facility will be set to start our 2020 winter season. Our thanks to the Wellington City Council for making this project happen.

Thank you to everyone who has welcomed me so warmly in to the Hockey Community and I look forward to working with you all over the next few years to continue to ensure people have a life-long love of hockey and a community to be proud of.

WELLINGTON REGIONAL HOCKEY STADIUM TRUST REPORT

Keith Binnie - Chair

2019 was a relatively quiet year for the Trust as we were focused primarily on helping WHA get through a challenging period. As reported at the AGM in March, the Trust had committed somewhere close to \$160,000 to help with the financial issues facing hockey and this year we were also substantial contributors to WHA's financial result. As I said in March, the Trustees have taken the view that it was the right thing to do for hockey in its hour of need and even though the Trust's funds are earmarked for facilities-related expenses and investment, it is hockey's money and it was important that some of it went to the area of greatest need. I must acknowledge at this point that the Trust has not been the only contributor to WHA trading its way out of debt. I thank WCC for its very generous contribution to WHA's improved financial position in waiving a significant portion of the lease payments for the NHS turfs. As you will see below, the recovery of the WHA could not have been possible without the assistance of the WCC.

There are however, limits to which the Trust can go without putting its own financial position and its ability to replace turfs in a timely manner at risk, and we have largely reached that position. An example that has been the replacement of the turf at Fraser Park which was provisionally due for replacement this year, but, in light of reports that the state of the turf was acceptable for another year, and our financial position, that decision will be put off until next year. The gaming trust funding situation is extremely tough for facilities in Lower Hutt, and Hutt City Council have declined our request for a contribution to the turf replacement.

On a positive, albeit sad, note, I would like to pay tribute to Murray Young who retired after about 30 years as a trustee, or a management committee member under the former structure. Murray has been a wise and sound voice on the Trust and was instrumental in the transition to the new partnership model with WHA around 2013/14. He has helped us put a new lens on how the Trust goes about its business and interacts with WHA. The loss of his experience, judgement and acuity will be something that is hard to replace.

On another positive note, we have recently welcomed Emily Richards as a trustee. While not a hockey aficionado, Emily will be a valuable contributor to the governance of the Trust.

In relation to our financial performance, we are looking at posting a deficit of a little over \$58,000 for the 2019 financial year. This was against a budgeted deficit of \$39,888. The differences have come about through the Trust's decision to waive \$50,000 from the WHA capital contribution, the forgiveness of \$41,637 from WHA for the Trust's management fee, \$90,000 was waived by WCC, the Trust decided to pay \$5,000 towards Karen Wallace's expenses in helping out WHA and the Trust during the year, none of the budgeted \$6,000 interest revenue was achieved, and the Trust took on a \$10,000 expense to fix the fences at Fraser Park. It should be noted that WCC had offered to forgive \$50,000 in each of 2019 and 2020 but the auditors have said that \$90,000 needs to be recognised in 2019 and \$10,000 in 2020.

Finally, thanks to all Trustees and Karen for all of your help during the year, but particularly Sam French for stepping up for me last year while I was busy with a few other priorities.

WILLIAM REX MANNING ONZM

10 October 1927 - 26 May 2019



With the passing of Rex Manning during the year Wellington hockey lost one of its longest serving and most highly valued contributors.

Rex joined what was then the Wellington Tech Old Boys hockey club in 1944 when he left college. Two years later, while still a teenager, he made the senior side and was the club's delegate to the Wellington Hockey Association.

Rex played 17 years of senior hockey, captaining the team from 1957 to 1963. The highlight was their legendary 1950 side, which shared the senior championship for the first time with Karori. It took more than 50 years for that success to be repeated when Northern United won the Men's Premier 1 title in 2001, 2002 and 2003, as well as in 2010.

When Rex retired from playing, he immediately switched to umpiring, coaching, making the draw and appointing umpires for the WHA. In those days the draw was made on a Tuesday and appeared in the *Evening Post* on a Thursday. Rain on Saturday meant receiving and making dozens of phone calls to arrange cancellations and transfers, which were broadcast over local radio station 2ZB. That was as well as coaching the junior team that his sons Bruce and Ross played for, and umpiring a couple of senior games in the afternoon. His lengthy involvement saw Rex named the Johnsonville Sports Association Club Administrator of the Year in 1992.

Tech Old Boys became Northern United in 1967, where Rex served as selector, coach, club captain, President and Patron.

He never just played hockey; he was always helping run the organisations that allowed everyone else to also play the game he loved. Hockey was very much a family affair in those days, with Rex's wife June and children Sue, Bruce and Ross very much part of the wider 'Northern family'.

From 1986-2015, Rex was involved in the Foundation for the National Hockey Stadium, which was the Trust that had been established separate from the WHA to oversee maintenance of the NHS turf and Pavilion, and to manage the turf timetabling. He chaired the Trust until 2010, handled the turf bookings, ran the Pavilion and carried out running repairs to the facilities.

Along with another Northern United club member, Ken Wood, Rex was instrumental in the fundraising and installation of the Fraser Park, Elsdon and Maidstone Park turfs.

His regular presence in the Pavilion was handy for many teams, when they had no umpire, he filled in until he was almost 80! Rex continued to attend committee meetings and was still at the NHS at the weekends, watching a new generation of Northern United hockey players, as well as supporting grand-daughters Lara and Jessie playing for the Karori Premier 1 team.

Rex was Patron and a Life Member of the Northern United Hockey Club, and a Life Member of the Wellington Hockey Association. He was made an Officer of the New Zealand Order of Merit for services to hockey in 2000. In 2012 he received a Hockey New Zealand Gold Award for his outstanding service. These accolades however, barely recognise his more than 70 years of service to the sport.

Rex considered the lifelong friends he made to have been a real highlight, but it really came down to a love for the game. He had recently said: "You get a lot of friends and satisfaction from the years of being involved, but I just enjoy doing something for hockey, and that's all it is."

Rex may have made have light of what he achieved for hockey, but his contribution was immense and he will be remembered fondly by his family, friends and all of the Wellington hockey community.

COMMUNITY HOCKEY

Wellington Hockey Programmes

In 2019, WHA stripped back a lot of our community work, with the intention of providing quality over quantity for our community initiatives and programmes. Through discussion and exploration we noticed a real gap and opportunity to prototype and programme for Wellington young women and in May we applied for funding from Kiwisport (Sport Wellington) to run a programme called Hockey Heart at the end of 2019 and into 2020. We received the funding and started delivery in Term 4 2019 in 7 intermediate and secondary schools. The feedback on this programme has been great. We have seen a huge impact as this programme has been built around a hockey programme that also teaches girls wellbeing concepts, such as social skills, mental and emotional health and why we should move our bodies. In 2019 we had over 250 girls through Hockey Heart and are in an exciting position where we will be producing a coaches and teachers resource for Hockey Heart in 2020.

We have also run the Have a Go programme over the year, which proved to be a hit to the participants. Have a Go is set to run again in 2020 at more locations than 2019 and with more connection to local clubs.

It has been a year of trial and error as we made our way through a tough period with an exciting 2020 ahead. We are looking forward to continuing Hockey Heart and increasing our support to get more people trying hockey for the first time through a few simple but well-run programmes and opportunities in our awesome local community.



Small Sticks in Schools

In 2019, WHA continued to deliver Small Sticks in Schools over the region with us visiting 11 schools and running a five session programme to every child in each school.

Like much of 2019, we stripped this back to ensure the quality of the delivery from our coaches, and the feedback was extremely positive.

We are looking forward to having even more children involved in 2020, now that we have more stability and capability in this space to really grow hockey at the grassroots level in our awesome local schools.

Athlete and Coach Development

WHA published a development calendar early in the season which provided a range of development opportunities for coaches to attend athlete development programmes. The Development CAPs programme designed for our top 40 U15 athletes was an example of a coach development opportunity run in conjunction with an athlete development programmes.

The Development CAPs Programme focused heavily on cultivating athletes with leadership qualities and good training habits. The success of this was evident in the role modelling and leadership of these athletes throughout their respective representative campaigns.

In 2018 WHA had developed a youth development curriculum and framework designed to develop both athletes and coaches collectively. This framework was continued on a smaller scale in the U13 and U15 representative space in 2019. It is planned in 2020 that full reinstatement of a modified framework will again be implemented.

WHA also delivered two camps for U13 and U15 athletes within the Capital Region. Trainers from Wellington and within the region were inducted and helped deliver these camps to over 100 athletes.

Umpire Development

In 2019 there was a continuation of the primary and secondary mentoring, where umpires were mentored throughout the season. In addition to the weekly mentoring, several workshops and briefings were provided to our primary, secondary and open grade umpires. The goal for 2020 is to continue to grow the capacity of umpire mentors, particularly in the primary and secondary space.



Summer Hockey

There was a larger uptake for the Small Sticks Summer Competition this year with 45 teams registered in Years 3/4, 5/6 and 7/8 grades. Upper Hutt Juniors ran their own competition at their local turf which provided opportunities for hundreds of young people to give hockey a go or sharpen their skills. This also was a great opportunity for our junior umpires to learn in a safe environment and get mentored by our more experienced umpires.

A huge thank you to Upper Hutt Hockey Club for their help and support in running local competition.

Masters Hockey

Wellington took six men's and two women's teams to National Masters Tournament 2019.

Hamilton was the venue, although, the tournament was held just as much in Rotorua as it was in Hamilton. This caused some consternation within the Wellington contingent, as the 1 ½ hour drive to Rotorua prompted some to wonder if it would have been sensible to accommodate teams there rather than Hamilton.

The week was warm and sunny, as it often is for this tournament. The Gallagher Turf by the lake in Hamilton, is a great venue – pleasant to be there when venue allocations allowed.

Wellington teams generally performed well but the medal haul was low - our M50 team won gold and M40 secured silver. It wasn't as successful a campaign as we would have hoped for.

WHA is a strong supporter of National Masters and we consistently send eight teams every year. That places our representation up there with the other major associations. Our local Master's competition's attract good numbers and we're always looking to improve the offering, attract more Master's players and in turn, increase our National Tournament coverage.

Neville Parker

Master's Advisory Council



Hutt Valley Sub-Association

Wellington Region competition results included Hutt United Men and Women each placing second in the Premiership. Congratulations to Upper Hutt R1 Women as grade winners, and to Naenae 2 and 3 battling out the R2 Women's final. The Hutt United Men won the R2 men's title.

In the secondary school competitions Naenae College and Hutt Valley High School drew the P3 girl's Final. Congratulations to those clubs and schools.

The Sportville Centre has opened at Fraser Park and this provides a new home base for Hutt Valley players, especially the Naenae Club.

Hutt Valley adults, and school players continue to provide almost a third of all WHA registrations and teams. This season there was an upsurge of interest in fielding age-group representative teams. There was support across the board for U13, U15, and U18 sides. Two combined teams from Wellington and Hutt Valley were entered in the U13 Rawleigh and Curtis Cups. Both teams enjoyed attending the tournaments in Gisborne for the girls, and Hawkes Bay for the boys. The girl's team was supported by the Pelorus Trust.

The changes of CEO and some changes to the WHA financial position has raised some challenges and we look forward to a period of stability. The changes to junior hockey adopted by NZ Hockey and WHA will alter the format of those competitions, with an emphasis on participation. Hutt Valley looks forward to working with WHA to develop pathways for this new format.

Thanks to WHA, its staff and umpires for support in 2019.

Warren Devereux

Hon Secretary

WELLINGTON REPRESENTATIVE TEAMS

Under 18

Women

Zara Beard
Ida Braun
Ashley Chandra
Kianna Dawson
Shaila Dayal
Orienne Macadré
Hannah McNaughtan
Nika Reichert
Amy Singer
Emily Singer
Nina Simmonds
Eleanor White
Emma Brokenshire
Phoebe Pottinger
Amy Wills
Josie Brown
Skylar McClelland

Head Coach - Annie McNaughtan

Manager - Neelum Patel

Men

Samuel Bishop
Aidan Churches
William Collins
Gideon Dyer
William Follet
Patrick Gray
Alex Greenough
Nathan Greenough
Jack Hawkey
Toby Jennings
Mika Lawrence
Hamish Nicholls
Theo Richardson
Daniel Stevens
Ryan Tait
Jareth Tupper
Rhys Ward

Coach - Graeme Murrell

Coach - Kiri Rakuraku

Manager - Angela Hawkey



REPRESENTATIVE TEAMS CONTINUED

Under 15

Premier Girls

Ariana Davis
Asha O'Gorman
Bria Fitzgerald
Abby Draper
Jessica Davenport
Juliet Leslie
Kelsey Hill
Tessa Sanson
Maia Karepa
Mandy Yeo
Marie Schafers
Sophia Hardie
Riana Pho
Annabelle Aliprantis
Cara Penetito
Selina Akavi
Kate Kominik Fraser
Isla Jones

Head Coach: *Sophie Macadré*

Assistant Coach: *Callum Olsen*

Manager: *Deb King*

Premier Boys

Tim Crawford
Logan Hewitt
Grayson Dawson
William Pita
Sean Moody
Rafe Persson
Shakeel Morar
Akaash Morar
Jack Garr
Olaf Baker
Otto Nelson
Suneel Patel
Mitchell Davison
Zak Rigby
Joshua Dyer
Sam Woolcott
Xander Redgrave
Aum Patel

Head Coach: *Finn O'Connor*

Assistant

Coach: *Johnny Brough*

Manager: *Leanne Dawson*

Championship Girls

Malama Pritchard-aiono
Charlotte Talbot
Maya Hatchwell
Maia Sherrard
Stacy Collett
Bella Willis
Frankie Thornton
Ruby Patete
Eloise Campbell
Kate Wallace
Tara Scott
Anna Knackstedt
Nayomi Thiagarajah
Amy Murray
Dannielle Fitness
Ariana Te Awa Douglas
Ruby Wright
Mia Coles Nixon

Non-Travelling Reserves

Mya Tito

Jade Forrest

Rachel Baker

Coach: *Kiri Rakuraku-Akavi*

Assistant Coach: *Cat Gooding*

Manager: *Rhys Egan*

Championship Boys

Jude Anderson
Luke Russell
Fletcher Wilks
Oliver Bowmar
Aryan Vallabh
Camron Neilson
James O'Brien
Matthew Crawford
Archie Cosslett
Karsten Hill
Jake Baker
Matthew Parry
Kori Cooper
Pacey Johnston
Jonathan Anderson
Matthew Kennedy
Fergus Randall
Logan Hackett

Non-Travelling Reserves

Milan Kanji

Noam Mckay

Finn Mckay

Head Coach: *Alex Grey*

Assistant Coach: *John Bowmar*

Manager: *Rachel Farrant*



REPRESENTATIVE TEAMS CONTINUED

Under 13

Premier Girls

Isla McCaw
Nishka Parekh
Kate Chandler
Charlotte Merwood
Theodora Gempton
Lucy Pottinger
Mckaela Woodward
Ella Mullane
Charlotte Dacombe-Bird
Hayley Todd
Bella Clentworth
Erica Van Leuven
Grace Banks
Sophie McGuigan
Emily Allen
Maggie Robinson
Yasmin Hannan
Rhianna Parry

Coach: *Kahu Kirikiri*

Assistant Coach: *James Woodward*

Manager: *Rachel Hay*

Premier Boys

Callum Stevens
Luke Naftel
Harrison Clulow
Harry Jennings
Lucas Aliprantis
Jared Woolcott
Hamish Davenport
Ned Dassanayake
Ben Dudding
Jack Josland
Hugo Maitland
Foy Kerkin
JJ Alo
Blake Whitfield
Matthew Clark
Desh Sukha
Josh Harvey-Green
Flynn Meyrick

Coach: *Jake Inwood*

Assistant Coach:

Gavin Naftel

Manager: *Debbie*

Woolcott

Championship Girls

Kevine Ingabire
Jessica Martin
Mia Tait
Tirzah Thuraingham
Elliot Guest
Greer Thornton
Ellie O'Brien
Jessie Holland
Francine Scott
Tilly Sipeli
Neve Edwards
Ella Glubb
Charlotte Giles
Emily Smith
Agus Mazur
Sophie Legge
Sarah Duncan
Alice Egerton

Non-Travelling

Reserves

Georgie Pennicott

Bella Manning

Coach: *Eddie Forster*

Assistant Coach:

Stefan Cavill-Fowler

Championship Boys

Nicolaas Stewart
Emileo Rossen
Jean Baptiste Macadre
Thomas Kominik Fraser
Andries Korb
Sammy Scott
Cameron Jaine
Lucious Pinto
Zac Fowler
Tommy Hanna
Henry O'Brien
Mikah Miller
Matty Prentice
Simon Korb
James Littlefair
Ezra Crawshaw
Prashaan Ishver
Trijal Pednekar

Non-Travelling Reserves

Liam Taylor

Renn Harper

Ashton Herrick

Head Coach: *Adesh*

Pednekar

Assistant Coach: *John*

Scott



REPRESENTATIVE TEAMS CONTINUED

Under 13 Futures

Wellington Futures Girls

Michaela Caughley
Zoe Philpott
Ellie Cook
Cathy Charles
Michelle Charles
Lania Vaireka
Jane Isaako
Jaylyn Rawiri
Charvarna Calcinai
Anouk Gude
Malia Fecteau
Giorgiana Cameron
Phoenix Kamaru-Mitchell
Ella Kumar

Coach: *Stephanie Weller*

Manager: *Bestie Charles*

Wellington Futures Boys

George Schaefer
Luka Dunwoodie
Liam Taylor
Thomas Agate
Jack Marsden
Cameron Sparks
Tommy Brow
Matthew Redshaw
Charlie Brader
Renn Harper
Dineth Abayarathna
Edoardo Ryan
James Carmichael
Ashton Herrick
Toby Champion
Marcus Locke
Jack Mahoney
Josh McLeigh
Samuel Agate

Coaches: *Toby Jennings and
Theo Richardson*

Manager: *Scott Champion*



WELLINGTON

REPRESENTATIVE UMPIRES

NHL Women:	<i>Lucy Lawlor</i>
Senior Nationals:	<i>Devendra Patel (Umpire Manager)</i> <i>Stephen McLachlan (Umpire)</i> <i>Tom Rutherford (Umpire)</i> <i>Paul Tessier (Judge)</i>
Capital U21 Men:	<i>Tom Rutherford, Keiran Wells and Nathan Waddle</i>
Capital U18 Men/Women:	<i>Andrew Spence (Umpire Manager)</i> <i>Malikah Davy and Alexandra Etherington (Umpires)</i>
Wellington U18 Girls:	<i>Ashley Hanaray</i>
Wellington U18 Boys:	<i>Jodeci Peita and Liam Hawke</i>
Under 15 Premier Boys:	<i>Rhys Ward</i>
Under 15 Championship Girls:	<i>Leah Forster</i>
Under 15 Championship Boys:	<i>Robert Apanowicz</i>
Under 13 Premier Girls:	<i>Jess Bond (Umpire Manager)</i> <i>Selina Akavi (Umpire)</i>
Under 13 Premier Boys:	<i>Grayson Dawson and Sam Woolcott</i>
Under 13 Championship Girls:	<i>Gareth Locke</i>

TEAM PLACINGS

Under 13 Premier Girls: 13th
Under 13 Premier Boys: 6th
Under 13 Championship Girls: 1st
Under 13 Championship Boys: 1st
Under 13 Development Girls: 8th
Under 13 Development Boys: 6th

Under 15 Premier Girls: 1st
Under 15 Premier Boys: 9th
Under 15 Championship Girls: 9th
Under 15 Championship Boys: 3rd

Under 18 Girls: 5th
Under 18 Boys: 3rd

Women:
Masters 35+ 6th
Masters 50+ 4th

Men:
Masters 35+ 5th
Masters 40+ 2nd
Masters 45+ 3rd
Masters 50+ 1st
Masters 55+ 4th
Masters 60+ 5th

SMALL STICKS COMPETITION RESULTS 2019

TEAM PLACINGS

KWIK STICKS (Year 7/8)

P1 Girls	PLACING
Karori	1
Kapiti	2
Indians	3
Northern United	4
Hutt United	5
Tawa	6

P1 Boys	PLACING
Karori	1
Hutt United	2
Kapiti	3
Indians	4
Harbour City	5
Northern United	6
Tawa	7

KWIK STICKS (Year 7/8)

P2 Boys	PLACING
Upper Hutt	1
Hutt United	2
Kapiti	3
Karori 1B	4
Harbour City	5
Toa	6
Northern United	7
Naenae	8
Wanuiomata	9
Upper	10
Hutt/Brooklyn Geckos	11
Karori 2B	12
Tawa	13

P2 Girls	PLACING
Harbour City	1
Tawa Blue	2
St Oran's	3
Tawa Red	4
Karori	5
Hutt United	6
Samuel Marsden	7
Northern United	8
St Oran's	9
Tawa Gold	10

Kiwi Sticks (Year 5/6)

Premier	PLACING
Brooklyn Geckos	1
Tawa	2
Karori Ackerley	3
Northern Spartans	4
Upper Hutt	5
Karori Maister	6
Northern Panthers	7
Hutt United 2	8
Hutt United 1	9
Kapiti Kotare	10
Indians Cobras	11
Harbour City Dragons	12
Kapiti Katipos	13

SMALL STICKS COMPETITION

CONTINUED

TEAM LISTS

Wellington Development (Scores not kept)

Brooklyn Geckos
 Wadestown Redsticks
 Indians Wolves
 Ngaio Thunder
 Wadestown Bluesticks
 Northern United Tigers
 Harbour City Phoenix
 Northern United Jaguars
 Northern United Pumas
 Karori Kakariki
 Ngaio Taniwha
 Queen Margaret College
 Northern United Leopards
 Indians Tigers
 Ngaio Gryphons
 Karori Kaka
 Harbour City Dragons

Wellington Development (Scores not kept)

Pauatahanui School
 Tawa
 Northern United Thunder
 Ngaio Dragons
 Queen Margaret College Pink
 Indians Lions
 Wadestown School Greensticks
 Brooklyn Geckos HC 2
 Karori 1
 Toa
 Indians Leopards
 Harbour City Tuis
 Brooklyn Geckos HC 1
 Karori 2
 Ngaio Titans
 Harbour City Toroa
 Northern United Cyclones
 Wadestown School Yellowsticks

Mini Sticks (Years 3/4)

Premier (Scores not kept)

Karori
 Northern United Tornadoes
 Northern United Lightning
 Indians

Hutt Development (Scores not kept)

Jittabugz
 Wainuiomata
 Upper Hutt 2
 Chilton St James
 Hutt United 1
 Hutt United 4
 Hutt United 2
 Hutt United 3
 Upper Hutt 1
 Naenae



SECONDARY COMPETITION RESULTS 2019

The following are competition results in order as at the end of pool play with final placings noted in far right column. Teams in bold and highlighted denote competition winner.

P1 G	TEAM	Matches Played	Win	Draw	Loss	For	Against	Points	Final Placing
	Wellington Girls College 1G	10	10	0	0	50	4	35	1
	St Matthews Collegiate 1G	10	7	0	3	38	13	25	2
	Wairarapa College 1G	10	7	0	3	36	12	23	3
	Queen Margaret College 1G	10	5	0	5	23	26	15	5
	Samuel Marsden Collegiate 1G	10	3	1	6	17	36	10	7
	Tawa College 1G	10	3	1	6	14	39	10	4
	Wellington East Girls College 1G	10	3	0	7	25	36	9	6
	Kapiti College 1G	10	1	0	9	18	55	3	8

P1 B	TEAM	Matches Played	Win	Draw	Loss	For	Against	Points	Final Placing
	Wairarapa College 1B	10	8	0	2	38	11	27	1
	Wellington College 1B	10	8	0	2	28	10	24	2
	Rathkeale College 1B	10	6	0	4	28	13	20	3
	Tawa College 1B	10	6	1	3	20	17	19	5
	Paraparaumu College 1B	10	4	0	6	21	18	14	4
	Rongotai College 1B	10	3	0	7	14	34	9	6
	Scots College 1B	10	2	1	7	10	30	7	7
	Hutt International Boys School 1B	10	2	0	8	8	34	6	8

P2 G	TEAM	Matches Played	Win	Draw	Loss	For	Against	Points	Final Placing
	Paraparaumu College 1G	9	9	0	0	31	1	29	1
	Aotea College 1G	10	6	2	2	19	11	21	5
	Wellington Girls College 2G	10	5	2	3	19	11	18	2
	St Orans College 1G	9	4	0	5	16	18	13	4
	Onslow College 1G	10	4	0	6	18	22	12	6
	Wairarapa College 2G	8	3	2	3	11	9	11	3
	Heretaunga College 1G	10	2	1	7	6	27	7	8
	St Marys College 1G	10	1	1	8	7	28	4	7

P2 B	TEAM	Matches Played	Win	Draw	Loss	For	Against	Points	Final Placing
	Onslow College 1B	10	7	2	1	39	14	26	1
	Wellington College 2B	10	5	3	2	37	17	21	6
	Kapiti College 1B	10	6	1	3	23	15	20	3
	St Patricks College Town 1B	10	5	2	3	34	19	20	4
	Hutt Valley High School 1B	10	6	1	3	24	23	19	2
	Paraparaumu College 2B	10	3	1	6	17	31	10	5
	Heretaunga College 1B	10	2	0	8	12	39	6	8
	St Patricks College Silverstream 1B	10	1	0	9	12	40	3	7

P3 G	TEAM	Matches Played	Win	Draw	Loss	For	Against	Points	Final Placing
	Hutt Valley High School 1G	10	8	1	1	32	9	29	1
	Naenae College 1G	10	7	1	2	30	10	25	2
	Chilton Saint James 1G	10	5	0	5	33	22	17	4
	Wellington East Girls College 2G	10	5	1	4	28	17	17	3
	Wellington Girls College 3G	10	4	3	3	20	17	16	5
	Sacred Heart College 1G	10	4	1	5	16	26	14	6
	Samuel Marsden Collegiate 2G	10	3	1	6	21	22	13	7
	Tawa College 2G	10	0	0	10	2	59	0	8

P3 B	TEAM	Matches Played	Win	Draw	Loss	For	Against	Points	Final Placing
	Wellington College 3B	10	9	1	0	39	3	32	1
	Aotea College 1B	10	6	1	3	24	14	19	5
	Wellington College 4B	10	5	0	5	18	12	17	3
	Wairarapa College 2B	10	5	1	4	18	13	17	2
	Scots College 2B	10	5	0	5	27	29	17	4
	Hutt International Boys School 2B	10	4	1	5	14	22	14	7
	Newlands College 1B	10	4	0	6	19	26	13	6
	Tawa College 2B	10	0	0	10	2	42	0	8

R1 G	TEAM	Matches Played	Win	Draw	Loss	For	Against	Points	Final Placing
	St Orans College 2G	10	8	1	1	24	10	27	1
	Onslow College 2G	10	5	3	2	17	9	19	3
	Newlands College 1G	10	5	2	3	14	11	17	5
	Wellington Girls College 4G	10	5	1	4	17	13	16	2
	Upper Hutt College 1G	10	4	2	4	20	12	15	4
	Kapiti College 2G	10	2	2	6	14	17	9	7
	Queen Margaret College 2G	10	2	2	6	8	25	8	6
	Samuel Marsden Collegiate 3G	10	1	3	6	5	22	6	8

R1 B	TEAM	Matches Played	Win	Draw	Loss	For	Against	Points	Final Placing
	Wellington High School 1B	10	6	3	1	32	11	23	2
	St Patricks College Silverstream 2B	10	6	3	1	17	4	22	1
	Rongotai College 2B	10	5	3	2	26	15	20	3
	Naenae College 1B	10	4	3	3	9	16	15	5
	St Bernards College 1B	10	3	2	5	19	20	12	4
	Onslow College 2B	10	2	2	6	17	19	9	6
	Kapiti College 2B	10	1	2	7	2	37	5	7

R2 G	TEAM	Matches Played	Win	Draw	Loss	For	Against	Points	Final Placing
	Paraparaumu College 2G	10	9	0	1	59	7	32	1
	Wellington Girls College 5G	10	6	1	3	17	15	20	2
	St Orans College 3G	10	5	1	4	24	16	18	3
	Sacred Heart College 2G	9	3	2	4	12	21	12	4
	Wellington East Girls College 3G	9	3	1	5	10	17	10	5
	Heretaunga College 2G	10	0	1	9	3	49	1	6

R2 B	TEAM	Matches Played	Win	Draw	Loss	For	Against	Points	Final Placing
	Raphael House 1B	10	7	1	2	28	14	23	2
	Wellington College 5B	10	5	1	4	24	14	17	3
	Marsden Whitby 1B	10	5	2	3	25	17	17	1
	Onslow College 3B	10	4	2	4	14	22	14	5
	Hutt International Boys School 3B	8	3	2	3	9	9	11	6
	Heretaunga College 2B	10	3	2	5	14	25	11	7
	Wellington College 6B	10	2	2	6	14	27	8	4

R3 G	TEAM	Matches Played	Win	Draw	Loss	For	Against	Points	Final Placing
	Mana College 1G	10	8	1	1	39	4	30	2
	St Orans College 3G	10	6	2	2	27	11	22	1
	Wellington Girls College 6G	10	5	2	3	11	10	17	3
	St Catherines College 1G	10	2	3	5	20	19	11	4
	Hutt Valley High School 2G	10	5	3	2	25	11	22	5
	Newlands College 2G	10	1	2	7	6	39	6	6
	Wellington High School 1G	9	1	1	7	6	35	4	7

R3 B	TEAM	Matches Played	Win	Draw	Loss	For	Against	Points	Final Placing
	St Patricks College Silverstream 4B	9	9	0	0	39	2	29	1
	Paraparaumu College 3B	10	8	0	2	27	12	26	2
	Taita College 1B	9	3	2	4	15	18	12	3
	St Patricks College Silverstream 3B	9	3	1	5	12	16	11	4
	Scots College 3B	9	2	1	6	13	28	8	5
	Hutt Valley High School 2B	10	1	0	9	5	35	3	6

OPEN GRADE COMPETITION

RESULTS 2019

The following are competition results in order as at the end of pool play with final placings noted in far right column.
Teams in bold and highlighted denote competition winner.

P1 W	TEAM	Matches Played	Win	Draw	Loss	For	Against	Points	Final Placing
	Hutt United 1W	14	14	0	0	70	15	47	2
	Harbour City 1W	14	10	1	3	54	20	34	1
	Dalefield 1W	14	7	3	4	28	19	25	3
	Victoria Uni 1W	14	6	3	5	30	32	21	4
	Northern United 1W	14	5	0	9	29	48	16	5
	Karori 1W	14	4	1	9	26	40	13	6
	Kapiti 1W	14	3	2	9	25	45	11	8
	Toa 1W	14	1	2	11	20	63	5	7

P1 M	TEAM	Matches Played	Win	Draw	Loss	For	Against	Points	Final Placing
	Dalefield 1M	14	13	0	1	72	14	45	1
	Hutt United 1M	14	13	0	1	57	18	44	2
	Naenae 1M	14	8	1	5	31	31	25	4
	Harbour City 1M	14	6	2	6	23	38	20	3
	Victoria Uni 1M	14	5	3	6	18	40	18	7
	Indians 1M	14	4	1	9	17	42	13	6
	Northern United 1M	14	3	1	10	22	57	10	5

P2 W	TEAM	Matches Played	Win	Draw	Loss	For	Against	Points	Final Placing
	Victoria Uni 2W	14	12	1	1	45	15	39	1
	Kapiti 2W	14	11	0	3	54	20	37	2
	Hutt United 2W	14	8	2	4	46	22	28	3
	Naenae 1W	14	8	1	5	25	14	25	4
	Harbour City 2W	14	7	2	5	31	25	25	5
	Karori 2W	14	4	1	9	23	36	13	6
	Upper Hutt 1W	14	1	1	12	15	61	4	7
	Northern United 2W	14	0	2	12	5	51	2	8

P2 M	TEAM	Matches Played	Win	Draw	Loss	For	Against	Points	Final Placing
	Tawa 1M	14	13	0	1	50	11	43	2
	Northern United 2M	14	8	2	4	50	33	28	1
	Victoria Uni 2M	14	8	0	6	43	38	25	3
	Hutt United 2M	14	7	0	7	41	35	23	4
	Naenae 2M	14	7	0	7	44	45	22	7
	Upper Hutt 1M	14	6	2	6	46	35	21	5
	Harbour City 2M	14	4	2	8	42	41	17	6
	Indians 2M	14	0	0	14	7	85	0	8

P3 W	TEAM	Matches Played	Win	Draw	Loss	For	Against	Points	Final Placing
	Victoria Uni 3W	14	13	1	0	48	10	43	1
	Kapiti 3W	14	11	1	2	43	21	35	2
	Harbour City 3W	14	5	4	5	35	23	21	3
	Hutt United 3W	14	6	1	7	24	28	19	4
	Wainuiomata 1W	14		1	8	25	33	17	5
	Victoria Uni 4W	14	3	3	8	14	26	12	6
	Tawa Titans 1W	14	3	2	9	14	31	11	8
	Kapiti 4W	14	2	3	9	21	52	9	7

P3 M	TEAM	Matches Played	Win	Draw	Loss	For	Against	Points	Final Placing
	Karori 1M	14	10	2	2	36	16	33	3
	Harbour City 3M	14	9	1	4	40	27	30	2
	Victoria Uni 4M	14	6	4	4	31	26	22	4
	Indians 3M	14	6	3	5	30	29	21	1
	Victoria Uni 3M	14	5	5	4	27	22	20	5
	Northern United 3M	14	3	5	6	30	36	15	6
	Kapiti 1M	14	3	4	7	38	40	14	7
	Hutt United 3M	14	1	2	11	24	60	5	8

R1 W	TEAM	Matches Played	Win	Draw	Loss	For	Against	Points	Final Placing
	Upper Hutt 2W	14	11	0	3	50	19	36	1
	YWPetone 1W	14	11	1	2	41	18	36	3
	Indians 1W	14	10	0	4	60	19	35	2
	Karori 3W	14	6	1	7	30	30	20	4
	Toa 2W	14	6	1	7	31	36	19	5
	Island Bay 1W	14	6	0	8	20	34	18	6
	Victoria Uni 5W	14	4	1	9	23	34	13	7
	Wainuiomata 2W	14	0	0	14	5	70	0	8

R1 M	TEAM	Matches Played	Win	Draw	Loss	For	Against	Points	Final Placing
	Tawa Titans 2M	14	10	3	1	56	16	36	4
	Indians 4M	14	9	3	2	44	13	32	1
	Northern United 4M	14	7	4	3	30	20	26	2
	Victoria Uni 5M	14	8	0	6	24	29	25	3
	Upper Hutt 2M	14	5	1	8	27	35	16	6
	YWPetone 1M	14	4	1	9	19	38	13	5
	Naenae 3M	14	3	1	10	23	55	11	8
	Karori 2M	14	2	3	9	15	32	9	7

R2 W	TEAM	Matches Played	Win	Draw	Loss	For	Against	Points	Final Placing
	Naenae 2W	14	9	3	2	40	13	32	1
	Harbour City 4W	14	10	2	2	43	14	35	3
	Upper Hutt 3W	14	3	1	10	19	43	11	4
	Naenae 3W	14	10	2	2	50	10	36	2

R2 M	TEAM	Matches Played	Win	Draw	Loss	For	Against	Points	Final Placing
	Harbour City 4M	14	9	3	2	51	16	33	2
	Hutt United 4M	14	9	2	3	44	20	32	1
	Kapiti 2M	14	5	4	5	38	31	20	4
	Indians 5M	14	9	0	5	43	35	29	3

R3 W	TEAM	Matches Played	Win	Draw	Loss	For	Against	Points	Final Placing
	Karori 4W	14	5	0	9	16	25	16	1
	Tawa Titans 2W	14	10	3	1	40	8	34	4
	Hutt United 4W	14	1	2	11	8	63	5	3
	Kapiti 5W	14	1	1	12	6	46	4	2

R3 M	TEAM	Matches Played	Win	Draw	Loss	For	Against	Points	Final Placing
	Kapiti 3M	14	7	3	4	54	38	27	2
	Upper Hutt 3M	14	6	3	5	36	40	21	1
	Tawa Titans 3M	14	9	2	3	50	27	32	5
	YWPetone 2M	14	3	0	11	21	68	9	4
	Naenae 4M	14	2	1	11	22	52	7	3
	Karori 3M	14	2	0	12	10	42	6	6

ACKNOWLEDGEMENTS

National Honours

National Squad:

Stephen Jenness
Dane Lett
Jake Smith
Harry Miskimmin
Brad Read
Kelsey Smith
Megan Hull

National Development Squad

Daniel Harris

NZ U21 Squad

Jordan Cohen
Sajan Patel
Lochie Paton
Ruby Logan
Estelle Macadré
Jessica Kelly
Julia Gluyas

NZ U18 Squad

Oliver Bunny
Roman Polaczuk
Ruby Baker
Jessica Kelly
Sorita Pho
Amy Rossiter-Stead

National Masters Honours

Masters Women

Women's 35's

Ana Gudsell
Marnie Taylor
Rachel Lilley
Sandra Cooper

Women's 40's

Daina Ratana
Leah Murphy

Women's 45's

Vicki Collins

Women's 50's

Gail Donaldson
Louise Westerkamp

Women's 55's

Sue Gall

Masters Men

Men's 35's

Ben Everist
Matt Ramsay
Stewart Roberston

Men's 40's

Andrew Martin
Bruce Irwin
David Timbs
Leon Mitchell

Men's 45's

Kether Gati

Men's 50's

Adrian Lobb
Chris Vautier
Grant Boyde
Michael Seymour

Men's 55's

Malcolm Sutherland
Richard Lennon

Men's 60's

Chuni Bhika
Hus Bhikha
Kelvin Read
Rob Clay

HOCKEY AWARDS 2019

Wellington Hockey

Team of the Year: *Capital U21 Men*

Tom Fergusson Cup - Club of the Year: *Hutt United*

Player of the Year Male: *Lochie Paton*

Player of the Year Female: *Jess Kelly*

Official of the Year: *Lucy Lawlor*

Coach of the Year: *Dane Lett*

MVP: *Kiri Rakuraku-Akavi*

Youth Representative

Most Improved Junior Umpire Male: *Sam Woolcott*

Most Improved Junior Umpire Female: *Selina Akavi*

Top Female Youth Grade Umpire: *Leah Forster*

Top Male Youth Grade Umpire: *Jodeci Peita*

Sport Wellington Awards

Dayle Jackson – *Lifetime Achievement Award*

Sally Morrison – *Trish McKelvey Leadership Award*

Karen Wallace – *Volunteer of the Year*

College Sport Wellington Awards

Female Coach of the Year - *Riley Jennings (Wellington Girls College)*

Hockey Players of the Year - *Ruby Baker (Wellington Girls College)*

Roman Polaczuk (Wellington College)

College Sport Wellington Hall of Fame Inductees

Phil Burrows

Niniwa Roberts

Kyle Pontifex

Beth Jurgeleit



Wellington Hockey's nominations at the Kapura Wellington Sportsperson of the Year Awards Left to right: Hemant Lala, Karen Wallace, Dayle Jackson, Estelle Macadré and Sally Morrison

CAPITAL UNDER 18 MEN

Following the trial process in late March, a squad of 23 field players plus 4 goalkeepers were selected to participate in squad trainings. During April this squad had one training session per week where their athleticism, hockey skills and game sense were tested and assessed.

In early May, the final team consisting 16 field players and 2 goalkeepers was named, giving this group of 18 players an 8 week period to build up for tournament.

During this period, trainings were increased to twice per week and included four practice matches – two against Central and two against local men's teams. This enabled us to test our structure, patterns and presses.

Progress was encouraging during this build-up and it was the group's mission "to play a structured, efficient, intelligent brand of team hockey whilst maintaining a positive team culture".

Tournament arrived and it immediately delivered another stark reminder of the pace and quality of execution required to perform at Regional level. Results from the three pool games were a 4-1 loss to Southern, a 0-0 draw with Central, and a 4-2 loss to North Harbour. This meant we would be playing for positions 5 to 8 during the second part of the week.

A 4-2 loss to Midlands and a 3-3 draw (with shoot out loss) to Northland saw us playing off for 7th/8th position. In our last game, against Northland, the boys were able to build pressure by holding possession for good periods of time. This resulted in a comprehensive and satisfying 6 - 1 win, which was a positive way to end the week.

Whilst the 7th placing was not ideal, for a group of young players, most of whom had never played at Regional level before, the effort, energy and intent must be applauded. They will all learn from this exposure and experience, and undoubtedly be better hockey players as a result.

Lastly, a special note of thanks must be given to Josh Symonds, our Assistant Coach, and to our Team Managers Peter and Lea Watt, for their significant contribution towards providing this group of young men with a positive hockey experience.

Manoj Parbhu

Capital U18 Men 2019 – Head Coach

Capital U18 Men

Harry Bird
Gus Borren
Adam Bruce
Oliver Bunny (C)
Michael Caldwell
Satish Cussins
Will Georgeson
Nick Holland (GK)
Josh Nelson
Sashin Parag
Roman Polaczuk (GK)
Tarn Richards
Mack Smith
Harley Thornton
Joshua Thuraisingham
Praneel Vallabh
Harrison Watt
Brayden Whitton

Head Coach – *Manoj Parbhu*

Assistant Coach – *Josh Symonds*

Managers – *Peter and Lea Watt*



CAPITAL UNDER 18 WOMEN

At the start of the 2019 campaign we wanted to change a few things in the woman's programme. Apart from developing the person, the player and the athlete, we wanted to establish a belief that we could and would be better than previous years. It was important to breed a culture where dedication and hard work collaborated with every individual sacrificing for each other.

During our 10-week campaign we focused early on off-turf activities where we wanted to identify who we are as a group, how we play to the strengths of each other and how we want to be seen as a team. In these off-turf activities we got support from other coaches, guest speakers and coaches from different codes who gave their insights and experiences from their 'best practices'.

During our first weeks and first practice game against Central it was clear that the level of fitness and general tactical knowledge needed a step up in order to play a role of significance at tournament. We targeted a few things on and off the ball and how we wanted to defend and attack. During the second game against Central we could see a big step up in terms of fitness and aggression on and off the ball, but still were missing the clinical finishing. The game went one quarter too long, with Central burying four goals in that period.

In the weeks, leading up to tournament we switched from a general training style based on high volume to a specific focus, targeting small games and set plays. Going in to tournament in July we did not set a specific outcome goal, rather we focused on small things we wanted to identify in each match.

The tournament week in Wellington was a cocktail of emotions where we reached a level that we had not throughout the lead-up. We experienced extreme highs where individuals raised their level and where the team effort saw North Harbour beaten 3-2 and Canterbury edged in the shoot-out after drawing 4-4. The team also lost 3-2 to Central, 4-2 to Northland and 5-1 to Auckland. We would have liked to have ended the campaign with a podium finish, but Canterbury proved too strong, winning the play-off game 3-1.

With a fourth place finish we definitely did a far better job than previous years and hopefully the Capital women can keep competing well in the years to come!

Daan Jongejan

Capital U18 Women 2019 – Head Coach

Capital U18 Women

Ruby Baker
Amy Bunny
Jaylin Dawson
Leah Forster
Lucy Hibbert
Ashleigh Hill (C)
Jade Jones
Jessica Kelly
Ariel Kelman
Poppy Lambert
Emma Martin
Maddie McLaren
Sorita Pho
Amy Rossiter-Stead (GK)
Aimee-Leigh Scott
Maia Shackelford
Kate Thomason (GK)
Kat Winter

Head Coach – *Daan Jongejan*

Assistant Coach –
Esther Chan

Assistant Coach –
Riley Jennings

Manager – *Lisa Baker*



CAPITAL UNDER 21 MEN

The Capital U21 Men had a fresh look in 2019 with several new team members and new management. With a young and inexperienced group, the campaign started early with a clear focus on developing individuals and creating an environment that supported learning and embedded standards of behaviour. There was genuine competition for selection into the final team and that asked each athlete to bring their best and collectively raise the bar. We selected a final group that we felt aligned to our core values and were the most capable of competing at National tournament.

Mindful of keeping player costs to a minimum, we had a very limited preparation, with only two practice games against Central. We worked hard to create a style of play that would challenge our players and extend their thinking, compromise oppositions, and provide a point of difference for us in competition. Our key focus was building a defensive system that would keep us in any match, make us very difficult to break down, and provide opportunities to launch attacks. The majority of our campaign was spent developing and understanding core concepts, and we spent very little time on set plays and moves. We felt this was the best approach to provide our athletes with a quality development experience and that if we built a strong foundation we could then easily apply tactics and be adaptable.

The tournament in May, played on a round-robin basis, arrived quickly and we drew defending champions and competition favourites North Harbour on day one. To some surprise we competed extremely well and dominated for periods - creating several penalty corners and goal-scoring opportunities. However we were unsuccessful in converting these chances and we went down 3-1. This gave us confidence in our ability and marched forward onto the next match, in what was an even competition there was never going to be any easy matches. We gained momentum and went on to defeat Southern 4-2, Auckland 5-0, Central 6-3, Midlands 3-1 and Canterbury 3-2 in succession, which left us top of the points table and taking home the gold medal. The group showed fantastic consistency and maturity in their play. They scored 22 goals, 9 more than the next best. Lochie Paton was named tournament MVP.

The strength of our team was having 18 players who all contributed and had clear roles. We played with a high substitution rate and valued the input that every player would make at any point. We can confidently say that all were much better hockey players at the end of the campaign than when it started. This was our biggest goal as a management team.

Acknowledgement must go to all players who committed themselves and bought into what we presented. A huge thanks to Assistant Coach, Benedict van Woerkom, who brought all his experience and passion to this group - his influence was immense. A special thanks to Manager Murray Mortimer who stepped up at late notice and went above and beyond what we asked for.

Thanks also to Physio Nitin Bhikha, whose work was of a high standard and we were fortunate to have 18 players available for every game.

Dane Lett

Capital U21 Men 2019 - Head Coach

Capital U21 Men

Casey Gill (GK)

Harrison Groom (GK)

Lochie Paton (C)

Jacob Harp

Graeme Murrell

Ethan Presow

Callum Olsen

Jayan Parbhu

Will Stables (C)

Cameron Gladding

Isaac Dyer

Jordan Cohen

Jack Rider

Liam Mortimer

Jack Boon

Rio Tuson

Sajan Patel

Hiren Mani

Head Coach – *Dane Lett*

Assistant Coach –

Benedict van Woerkom

Manager – *Murray*

Mortimer

Physio – *Nitin Bhikha*



CAPITAL UNDER 21 WOMEN

The 2019 Capital U21 Women continued the development and progress from the 2018 campaign. For the first time in years competition for places was strong and the dedication of the players was also strong throughout the early stages. The team came together well and looked to play some enterprising hockey on the back of our aggressive pressing concepts. A highlight prior to tournament was hosting Australia Country as they toured the North Island. Two tough games against quality opposition assisted in our preparation.

The team hit Tournament in May making a statement in game one against Auckland. A nervous start saw the team go down a goal before storming out eventual winners 5-2. Jess Kelly converted four, while Yazzmine Woodhouse scored the other goal.

A 4-0 loss in the second game against eventual champions Canterbury after competing strongly dampened the spirits a little.

The next two games saw the team draw 2-2 with Southern and 1-1 with Midlands as they struggled to match the heights of the first two games. Each game went to a shootout and on both occasions Julia Gluyas in goal dominated and ensured the extra points went Capital's way.

Playing Central in our fifth game in five days proved a difficult challenge. Despite going down 5-1 on the scoreboard the team certainly pushed through the fatigue barrier and fought courageously.

The rest day was much needed before playing home side, North Harbour in our final game where we found some of our earlier form. North Harbour scored early but Capital was competing well and creating chances of our own. Trailing at half time by the single goal, the plan was to continue to push for an equaliser, but unfortunately Harbour scored again early in the third quarter. From there the result pushed out to a 5-1 loss, which was not reflective of the closeness of the game.

The inability to gain outright wins against Southern and Midlands cost the team a top four placing, behind Auckland, but it was still the best result for a number of years from a Capital team at this tournament. The players worked hard throughout and produced some very good hockey at times.

The team was well led by captain Ruby Logan for the second year and supported by Kiriana Wairau-Hunter. Physio Lucy Pringle again kept the players on the field throughout the week and was a great addition to the management staff. The amazing Malesha Wairau and Lee Hunter again looked after the team as managers. A special thank you and acknowledgement of the time and care these two special people have put into not only this team, but to many Capital teams over the years.

Bjorn Dix

Capital U21 Women 2019 - Head Coach

Capital U21 Women

Claudia Adamson (GK)

Sara Cooper

Brooke Eddie

Neave Ellis

Izzy Gibson

Julia Gluyas (GK)

Laura Jurgeleit

Jessica Kelly

Ruby Logan (C)

Estelle Macadré

Charlotte Mangos

Jessie Manning

Grace Nancarrow

Victoria O'Keeffe

Jenna Peel

Georgina Peterson

Kiriana Wairau-Hunter

Yazzmine Woodhouse

Head Coach – *Bjorn Dix*

Managers – *Lee Hunter*

and Malesha Wairau-Hunter

Physio – *Lucy Pringle*



CAPITAL NHL MEN

This was the 21st and final year of the NHL and our campaign theme was fittingly around our history and honouring our past winning teams.

With the unfortunate financial situation that WHA and Capital Hockey faced at the beginning of the year, there was a real fear that we would possibly not be able to enter teams and defend our title.

Thanks in abundance to the excellent work from the WHA staff, Board members and the wider community, the men's team was well supported and we were able to meet all of our funding targets. This meant we were able to select a very strong group of players that we felt was capable of winning NHL. The 2019 Cobras were a well-balanced group with a number of players having Black Sticks experience, two outstanding International Guest Players, and in-form local talent.

Our build-up was difficult as we had no contact with our Auckland-based players or IGPs before we met before tournament. This was a decision we made to keep player costs to a minimum.

The Cobras' started well and got through pool play with three wins over Tasmania 5-1, Central 5-2 and Auckland 3-2. We came unstuck in the top four, where we played good hockey but struggled to convert in the attacking circle and leaked soft goals defensively, it was a frustrating tournament where four narrow losses to eventual champions North Harbour 4-3, to Canterbury 3-2, to Auckland 4-2 and to Canterbury again,

4-2. This meant a disappointing fourth place, which was a tough pill to swallow as we firmly felt we were amongst the best teams at NHL and out-played most oppositions. It again proved the importance of being clinical in both circles.

Thanks must go to the players and staff who worked hard throughout the campaign and, although the final placing was not what we had worked towards, they have added to the Cobra's legacy.

Hemant Lala

Capital Cobras' 2019 - Head Coach

Capital NHL Men

Seb Buddle

Jordan Cohen

John Forsyth (GK)

Daniel Harris

Blair Hilton

Dane Lett

Trent Lett (C)

Ollie Logan

Kurt Lovett (IGP)

Harry Miskimmin

Liam Mortimer

Sajan Patel

Lochie Paton

Brad Read

Joel Rintala (IGP)

Max Ruffell (GK)

Jake Smith

Benedict van Woerkom

Rowan Yeo

Head Coach – *Hemant Lala*

Assistant Coach – *Amrit John*

Manager – *Mike van Woerkom*

Physio – *Nitin Bhikha*



CAPITAL NHL WOMEN

The 2019 NHL Women's campaign again proved to be a challenging one. Many reasons contributed to this including the uncertainty around Black Sticks availability and injuries, including two in the week before tournament. Throughout the buildup despite the disruptions the players worked hard to prepare for the event. Heading into the first game against a strong Midlands side there was a sense of optimism. The game was a cracker and a quality performance by all. In the end Capital went down 1-0 in an entertaining and positive attacking game. The players took a lot of confidence heading into the game against Central.

This started well with Capital taking the lead early through Estelle Macadré after dominating the first quarter. An error on outlet early in the second quarter provided Central with a rare opportunity and they levelled the contest. A goal right after half time put Central ahead 2-1, which remained the final score. From there, they lost their final pool game 3-0 to Northland, putting them in the bottom four.

The crossover games saw the team face Auckland and Southern. After being down 2-0 against Auckland early, the players showed plenty of fight to draw level heading into the final quarter. Despite a number of chances, they were unable to convert, and Auckland scored from a late corner to take the narrow win. The game against Southern was another tough one to get into. A lacklustre first half saw a 0-0 scoreline before, three second half goals saw Capital to a well-deserved victory. A 4-0 loss to Midlands ensured we would face Southern again for the wooden spoon. It was not something the team wanted in the final NHL, but they dominated the game and came away with a 3-1 victory to ensure a seventh place finish.

The team was well led by Felicity Reidy and supported by Black Stick Megan Hull, who added a tremendous amount both on and off the field. We also welcomed two international guest players, Caashia Karringten (Canada) and Kathryn Lane (Great Britain). Kathryn especially was fantastic to have in the group and contributed immensely.

Special thanks to the management team. Karen Wallace for coming out of retirement to manage again. Not only for her work during tournament, but also the considerable investment of time she made to ensure the campaign happened. Alice Stephens for her efforts to keep the team together off and on the field. She was certainly kept busy as the week went on! Assistant Coach, Di Jordan contributed greatly and was a significant reason the campaign remained positive, despite the many setbacks.

Bjorn Dix

Capital NHL Women 2019 - Head Coach

Capital NHL Women

Charlotte Eastman
Georgia Garden-Bachop
Megan Hull
Anahira Hudson
Caashia Karringten (IGP)
Jessica Kelly
Bridget Kiddle
Kathryn Lane (IGP)
Rachel Lilley (GK)
Ruby Logan
Estelle Macadré
Jessie Manning
Bridie McCullough
Annie McNaughtan
Hannah Milne
Felicity Reidy (C)
Maddie Simmonds
Madeleine Williamson (GK)

Head Coach – *Bjorn Dix*

Assistant Coach – *Di Jordan*

Manager – *Karen Wallace*

Physio – *Alice Stephens*



Wellington Hockey Association Inc. Performance Report

For the year ended 31 December 2019



Independent auditor's report

To the Board of Wellington Hockey Association Incorporated

Opinion

We have audited the accompanying performance report of Wellington Hockey Association Incorporated on pages 4 to 12, which comprises the entity information, the statement of service performance, the statement of financial performance and statement of cash flows for the year ended 31 December 2019, the statement of financial position as at 31 December 2019, and the statement of accounting policies and notes to the performance report.

In our opinion:

- a) the reported outcomes and outputs, and quantification of the outputs to the extent practicable, in the statement of service performance are suitable
- b) the accompanying performance report presents fairly, in all material respects:
 - the entity information for the year then ended
 - the service performance for the year then ended, and
 - the financial position of Wellington Hockey Association Incorporated as at 31 December 2019, and its financial performance, and cash flows for the year then ended in accordance with Public Benefit Entity Simple Format Reporting – Accrual (Not-For-Profit) issued by the New Zealand Accounting Standards Board.

Basis for Opinion

We conducted our audit of the statement of financial performance, statement of financial position, statement of cash flows, statement of accounting policies and notes to the performance report in accordance with International Standards on Auditing (New Zealand) (ISAs (NZ)), and the audit of the entity information and statement of service performance in accordance with the International Standard on Assurance Engagements (New Zealand) ISAE (NZ) 3000 (Revised). Our responsibilities under those standards are further described in the 'Auditor's responsibilities for the audit of the performance report' section of our report.

We are independent of Wellington Hockey Association Incorporated in accordance with Professional and Ethical Standard 1 (Revised) 'Code of ethics for assurance practitioners' issued by the New Zealand Auditing and Assurance Standards Board, and we have fulfilled our other ethical responsibilities in accordance with these requirements.

We believe that the audit evidence we have obtained is sufficient and appropriate to provide a basis for our opinion.

Other than our capacity as auditor we have no relationship with, or interests in, Wellington Hockey Association Incorporated.

Other matter

The performance report of Wellington Hockey Association Incorporated for the year ended 31 December 2018, were audited by another auditor who expressed a modified opinion on the performance report dated 25 March 2019.

Other information

The Board are responsible for the other information. The other information comprises the information included in the directory, but does not include the financial statements, entity information and statement of service performance, and our auditor's report thereon.

Our opinion on the performance report does not cover the other information and we do not express any form of audit opinion or assurance conclusion thereon.

In connection with our audit of the performance report, our responsibility is to read the other information and, in doing so, consider whether the other information is materially inconsistent with the performance report or our knowledge obtained in the audit or otherwise appears to be materially misstated. If, based on the work we have performed, we conclude that there is a material misstatement of this other information, we are required to report that fact. We have nothing to report in this regard.

Responsibilities of the Board for the performance report

The Board are responsible for:

- a) Identifying outcomes and outputs, and quantifying the outputs to the extent practicable, that are relevant, reliable, comparable and understandable, to report in the statement of service performance
- b) The preparation and fair presentation of the performance report on behalf of Wellington Hockey Association Incorporated which comprises:
 - the entity information
 - the statement of service performance; and
 - the statement of financial performance, statement of financial position, statement of cash flows, statement of accounting policies and notes to the performance report in accordance with Public Benefit Entity Simple Format Reporting – Accrual (Not-For-Profit) issued by the New Zealand Accounting Standards Board, and
- c) for such internal control as the Board determine is necessary to enable the preparation of the performance report that is free from material misstatement, whether due to fraud or error.

In preparing the performance report, the Board are responsible on behalf of Wellington Hockey Association Incorporated's for assessing Wellington Hockey Association Incorporated's ability to continue as a going concern, disclosing, as applicable, matters related to going concern and using the going concern basis of accounting unless the Board either intend to liquidate Wellington Hockey Association Incorporated or to cease operations, or have no realistic alternative but to do so.

Auditor's responsibilities for the audit of the performance report

Our objectives are to obtain reasonable assurance about whether the performance report is free from material misstatement, whether due to fraud or error, and to issue an auditor's report that includes our opinion. Reasonable assurance is a high level of assurance, but is not a guarantee that an audit conducted in accordance with ISAs (NZ) and ISAE (NZ) 3000 (Revised) will always detect a material misstatement when it exists. Misstatements can arise from fraud or error and are considered material if, individually or in the aggregate, they could reasonably be expected to influence the decisions of users taken on the basis of the performance report.

As part of an audit in accordance with ISAs (NZ) and ISAE (NZ) 3000 (Revised), we exercise professional judgement and maintain professional scepticism throughout the audit. We also:

- Identify and assess the risks of material misstatement of the performance report, whether due to fraud or error, design and perform audit procedures responsive to those risks, and obtain audit evidence that is sufficient and appropriate to provide a basis for our opinion. The risk of

not detecting a material misstatement resulting from fraud is higher than for one resulting from error, as fraud may involve collusion, forgery, intentional omissions, misrepresentations, or the override of internal control.

- Obtain an understanding of internal control relevant to the audit in order to design audit procedures that are appropriate in the circumstances, but not for the purpose of expressing an opinion on the effectiveness of Wellington Hockey Association Incorporated's internal control.
- Evaluate the appropriateness of accounting policies used and the reasonableness of accounting estimates and related disclosures made by management.
- Conclude on the appropriateness of the use of the going concern basis of accounting by the Board and, based on the audit evidence obtained, whether a material uncertainty exists related to events or conditions that may cast significant doubt on Wellington Hockey Association Incorporated's ability to continue as a going concern. If we conclude that a material uncertainty exists, we are required to draw attention in our auditor's report to the related disclosures in the performance report or, if such disclosures are inadequate, to modify our opinion. Our conclusions are based on the audit evidence obtained up to the date of our auditor's report. However, future events or conditions may cause Wellington Hockey Association Incorporated to cease to continue as a going concern.
- Evaluate the overall presentation, structure and content of the performance report, including the disclosures, and whether the performance report represents the underlying transactions and events in a manner that achieves fair presentation.
- Perform procedures to obtain evidence about and evaluate whether the reported outcomes and outputs, and quantification of the outputs to the extent practicable, are relevant, reliable, comparable and understandable.

We communicate with the Board regarding, among other matters, the planned scope and timing of the audit and significant audit findings, including any significant deficiencies in internal control that we identify during our audit.

This report is made solely to the Board of Wellington Hockey Association Incorporated. Our audit has been undertaken so that we might state to the Board those matters we are required to state to them in an auditors' report and for no other purpose. To the fullest extent permitted by law, we do not accept or assume responsibility to anyone other than the Board, for our audit work, for this report, or for the opinions we have formed.

Kendons Chartered Accountants Limited

Michael Markham
Director

Lower Hutt
4 March 2020

Contents

Table of Contents	2
Directory	3
Entity Information	4
Statement of Service Performance	5
Statement of Financial Performance	6
Statement of Financial Position	7
Statement of Cash Flows	8
Notes to the Performance Report	9-12

Directory

Page	Incorporation Number	WNIS 215403
2	Auditors	Kendons Chartered Accountants Limited
3	Chief Executive	Lisa Jones (from January 2020)
4	Accountants	Findex NZ Limited
5	Bankers	Bank of New Zealand
6	Solicitors	Gibson Sheat
7	Business Address	Physical National Hockey Stadium Mount Albert Road Newtown Wellington NZ
8		Postal PO Box 2891 Wellington, 6140
9-12		

Entity Information
For the year ended 31 December 2019

Legal Name of Entity: Wellington Hockey Association Inc
 Type of Entity and Legal Basis (if any): Wellington Hockey Association Inc is an Incorporated Society registered under the Incorporated Societies Act 1908

Incorporated Society Registration Number: WNIS 215403

Wellington Hockey Association's Purpose / Mission:

Vision Statement
Inspiring a life-long love of Hockey
Our Mission
Making great hockey happen

Wellington Hockey Association's operations are governed by its constitution, referred to as The Rules of Wellington Hockey Association Inc, revised 4 April 2017.

Entity Structure

The Wellington Hockey Association ("the Association") is an incorporated society and is an association of the New Zealand Hockey Federation, charged with developing, delivering and growing hockey in the greater Wellington region.

The Association is governed by a Board of Directors comprising of 7 members. In addition, the President, the Chair or a Trustee of the Wellington Region Hockey Stadium Trust and the Chief Executive attend all board meetings.

The members of the governing body are as follows:

- Sally Morrison, Chair (appointed August 2018)
- Kyle Pontifex, Deputy Chair (elected April 2018)
- Karen Wallace (co-opted Sept 2018, resigned April 2019)
- Danella Rennie (elected March 2016)
- Rochelle Roddick (co-opted Nov 2018, then appointed March 2019)
- John Thomson (appointed March 2019)
- Suzannah Sharp (appointed March 2019)
- Gareth Juene (co-opted December 2019)
- Anna Rossiter-Stead (Aspiring Director and intern, approved to attend December 2019)

The Board must meet at least six times a year.

Main sources of the Entity's cash and resources & main methods used to raise funds

- Fees and Subscriptions
- Grants and Sponsorship
- Facilities Income

The Entity's reliance on volunteers and donated goods & services

Wellington Hockey Association relies on volunteers for umpiring, coaching and providing support at events at the National Hockey Stadium and its other locations. Wellington Hockey also uses advisory groups that are made up of volunteers for areas of speciality regarding the sport of hockey.

Statement of Service Performance
For the year ended 31 December 2019

Description of the Entity's Outcomes

Key strategic objectives and outcomes Wellington Hockey Association aims to achieve, influence and deliver include:

- *More people enjoying the whole hockey experience for longer*
- *Opportunities for all to participate, grow and excel*
- *Strong and sustainable hockey in Wellington*
- *A modern, technology-enabled, innovative and customer-focused organisation*

Outputs and measures of quality and objectives in respect to delivery	Actual this year	Actual last year
Coaches and Umpires Involved in workshops	375	406
Community Satisfaction Survey (Voice of Participant)	N/A	60.00%
Growth in Winter membership	-11%	6.00%
More participants involved in Wellington Hockey Programmes	4792	9,973
20% of NZ U21's come from the Wellington region	11.30%	11.11%
20% of NZ U18's come from the Wellington region	9.30%	12.66%
20% of NZ Blacksticks come from the Wellington region	14.00%	N/A
Wellington teams winning (top 4 placings)	50.00%	30.00%
Growth in Sponsorship and Funding Income	17.89%	-41.00%

Note the Voice of the Participants survey was not conducted in 2019.

**Statement of Financial Position
As at 31 December 2019**

	2019	2018
Current Assets		
Cash at Bank	\$ 206,897	\$ -
Cash on hand / petty cash	-	496
Prepayments	41,458	17,982
Accounts Receivable	19,747	77,645
Bad Debt Provision	-	(21,699)
Goods & Services Tax	49,081	17,799
Inventory	7,775	10,565
Total Current Assets	324,958	102,789
Total Fixed Assets	92,717	121,045
Current Liabilities		
Bank Overdraft	-	61,726
Revenue Received in Advance	304	110,931
Accounts Payable	320,206	137,387
Employee costs payable	11,625	14,438
Funds on Behalf	-	6,000
Accruals	10,014	-
Total Current Liabilities	342,149	330,483
Net Assets	75,527	(106,648)
Equity and Accumulated Funds	75,527	(106,648)

For and on behalf of the Board

 Chairperson
 Board Member
4.3.2020 Date

**Statement of Financial Performance
For the year ended 31 December 2019**

	2019	2018
Income		
Affiliation Fees	\$ 265,619	\$ 260,070
XCEL	-	14,354
Capital High Performance	206,700	214,872
Representative	131,717	130,691
Sponsorship/Grants	352,629	299,113
Events/Competition	137,656	119,730
Community Hockey	73,681	36,933
Other Income	40,330	6,279
Facilities Income	403,832	377,557
Total Income	1,612,164	1,461,600
Less: Direct Expenses		
Direct Expenses		
Affiliation Fees HNZ	91,151	89,081
Capital High Performance	143,001	221,470
Representative	144,940	104,876
XCEL	-	3,494
Events/Competitions	100,437	45,875
Community Hockey	45,382	91,271
Facilities	141,659	148,254
Other Direct Expenses	28,491	2,883
Total Direct Expenses	695,061	707,204
Gross Surplus	917,103	754,396
Less: Expenses		
Audit Fee	12,571	10,320
Insurance, Finance & Banking	65,768	10,266
Interest Expense	4,427	2,516
Meeting & Conference Expenses	6,173	8,470
Office Costs	71,972	27,165
Salaries & Wages	378,026	660,715
Vehicle Expenses	4,651	9,646
WHRST	189,432	157,963
Other Expenses	1,907	68,536
Total Expenses	734,927	955,598
Net Surplus / (Deficit) for the year	182,176	(201,202)

These financial statements should be read in conjunction with the statement of accounting policies & the notes to the performance report.

These financial statements should be read in conjunction with the statement of accounting policies & the notes to the performance report.

Statement of Cash Flows
For the year ended 31 December 2019

	Notes	2019 \$	2018 \$
Cash Flows from Operating Activities			
<i>Cash was received from:</i>			
Participant Income		885,891	809,227
Grants and Sponsorship		247,865	312,798
Facilities		382,208	383,771
Interest Received		41	(2,451)
<i>Cash was applied to</i>			
Facilities		(133,360)	(157,900)
Programmes, Events and Competitions		(170,851)	(226,227)
Representative		(375,665)	(321,076)
Administration		(561,121)	(916,838)
Net cash flow from operating activities		275,009	(118,696)
Cash Flows from Investing and financing activities			
<i>Cash was applied to:</i>			
Property, Plant and Equipment		(6,386)	(20,909)
Financing		-	(3,114)
Net Cash Flow from Investing and Financing Activities		(6,386)	(24,023)
Net Increase / Decrease in Cash		268,623	(142,719)
Opening Cash		(61,726)	80,993
Closing Cash		206,897	(61,726)
This is represented by:			
Bank / (Bank Overdraft)		206,897	(61,726)

These financial statements should be read in conjunction with the statement of accounting policies & the notes to the performance report.

13 March 2020

The Board Chair
Wellington Region Hockey Stadium Trust
Via email

Attention: Keith Binnie

Dear Keith

REPORT TO THE BOARD FOR THE YEAR ENDED 31 DECEMBER 2019

We have completed our audit of the performance of Wellington Region Hockey Stadium Trust for the year ended 31 December 2019 on which we have issued an unmodified audit opinion.

We include in this report all matters arising from our audit of the performance report of Wellington Region Hockey Stadium Trust that we consider appropriate to bring to the attention of the Board.

This correspondence is part of our ongoing discussions as auditor in accordance with our engagement letter and as required by New Zealand auditing standards. This report includes only those matters that have come to our attention as a result of performing our audit procedures and which we believe are appropriate to communicate to the Board. The audit of the financial statements does not relieve Management or the Board of their respective responsibilities. The ultimate responsibility for the preparation of the financial statements rests with the Board.

Audit Findings

During our audit we identified the following matters that we bring to your attention.

Performance report presentation

While not material, we noted during our review of the presentation and disclosure of the performance report, inconsistencies between the account category names in the statement of cash flows and statement of financial performance. Ideally these two statements should be comparable in terms of account category names. We understand from your external accountant that this is a legacy issue, and that for comparative purposes this treatment has been consistently adopted in the current year. We have provided your management team with a performance report template, including model performance reporting to use as guidance for next year's performance report. We recommend that the presentation is reviewed to ensure consistency throughout the Association's performance report. You are welcome to contact us during the year to discuss this matter further.

Conflict of interest register

We enquired as to whether a conflict of interest register was maintained by the trustees. We were advised that one wasn't. It is important that one is maintained to ensure that decision making processes are not influenced by actual or perceived bias, also to assist in the preparation of Note 7., Related Parties in the performance report. The Wellington Hockey Association maintains interests register, we suggest that the trustees get the template from them. More information on conflicts of interest is on the Charities Services website - <https://www.charities.govt.nz/im-a-registered-charity/officer-information/officer-kiv/conflict-of-interest/>

Other than the above matters, there were no significant audit or accounting issues arising from an audit to bring to your attention.

Other Communications

Independence

We confirm that we have maintained our independence in accordance with the independence requirements of the professional and ethical standards and, in our professional judgement, we are independent of Wellington Region Hockey Stadium Trust.

Professional relationships

In performing our audit of Wellington Region Hockey Stadium Trust for the year ended 31 December 2019 no relationships or other matters existed between our firm and Wellington Region Hockey Stadium Trust that, in our professional judgement, may reasonably be thought to impact on our independence.

Non-compliance with applicable laws and regulations

In performing our audit of Wellington Region Hockey Stadium Trust for the year ended 31 December 2019, we have not become aware of any instances of non-compliance with applicable laws and regulations that would have an impact on the determination of material amounts and disclosures in the financial statements.

Fraud

In performing our audit of Wellington Region Hockey Stadium Trust for the year ended 31 December 2019, no matters relating to fraud, concerning either staff or the Board came to our attention.

Accounting policies and financial reporting

There were no changes in accounting policies during the year ended 31 December 2019.

Related parties

In performing our audit of Wellington Region Hockey Stadium Trust for the year ended 31 December 2019 no significant related parties came to our attention that, in our professional judgement, need to be communicated to the Board.

Subsequent events

New Zealand auditing standards require us to make formal enquiry of Management and the Board as to whether they are aware of any subsequent events that are required to be disclosed in the financial statements. We have received written confirmation from the Board that as far as you are aware, there are no material subsequent events that should be disclosed in the financial statements.

Conclusion

We have prepared this report solely for the use of the Board and it would be inappropriate for it to be made available to third parties and, if such a third party were to obtain a copy without our prior written consent, we would not accept responsibility for any reliance that they might place on it.

We would like to take this opportunity to extend our appreciation to the Team at Wellington Region Hockey Stadium Trust and Wellington Hockey Association Incorporated, and Findex for their assistance and cooperation during the course of our audit.

If you would like to discuss any matters raised in this report please do not hesitate to contact us.

Yours sincerely



Kendons Chartered Accountants Limited

Michael Markham

Director



Wellington Region Hockey Stadium Trust
Performance Report
For the year ended 31 December 2019

	Page
Directory	3
Entity Information	4
Statement of Service Performance	5
Statement of Financial Performance	6
Statement of Financial Position	7
Statement of Cash Flows	8
Notes to the Financial Statements	9 - 11

Directory

Charities Commission Reg. CC52498

Auditors Kendons Chartered Accountants Limited

Chair Keith Binnie

Accountants Findex NZ Limited

Bankers Bank of New Zealand

Business Address
Physical
National Hockey Stadium
Mount Albert Road
Newtown
Wellington NZ

Postal
PO Box 2819
Wellington, 6140

Entity Information

For the year ended 31 December 2019

Legal Name of Entity: Wellington Region Hockey Stadium Trust

Type of Entity: Wellington Region Hockey Stadium Trust is a registered Charity & incorporated as a charitable trust

Charity Registration Number: CC52498

Vision Statement
More kids and adults enjoying the hockey experience.

Mission Statement
To provide quality turfs and facilities to meet the needs of hockey.
Our Values
Teamwork, Unity, Respect, Fun

Entity Structure
Wellington Region Hockey Stadium Trust is a Charitable Trust which owns and leases hockey facilities that Wellington Hockey Association operates for hockey players in the Wellington Region. The Trust is responsible for asset stewardship including strategic planning, development and overseeing asset maintenance of hockey facilities.

The Trust is governed by a Board comprising of 7 Trustees. The Trustees are as follows:

- Keith Binnie (Chair)
- Karen Wallace (resigned November 2018)
- Murray Young
- David Bott (resigned March 2019)
- Sam French
- Brent Miskimmin
- Hamish Clentworth
- John Bowmar (appointed July 2019)
- Emily Richards (appointed November 2019)

The Trustees meet a minimum of four times a year and are volunteers.

Main Sources of the Trust's Cash and Resources and main methods used to raise funds:
The Wellington Region Hockey Stadium Trust's primary source of funding is through the management contract with Wellington Hockey Association and interest from term deposits.

The Trust will also periodically apply for Grant and council funding to help with the costs associated with developing new and upgrading existing facilities.

Statement of Service Performance

For the year ended 31 December 2019

Key Strategic objectives and outcomes Wellington Region Hockey Stadium Trust aims to achieve and deliver include:

Greater access to quality turfs and facilities

Strong partners who consistently deliver

An organisation that has respect in the community it serves

Our outputs

Turfs and facilities:

- The Trustees received two Turf and facility maintenance reports during the year.
- The Trust continued to work closely with WHA to support them through their financial challenges. The Trust invested in upgrading the Fraser Park Turf fences which would otherwise have been a WHA expense and helped WHA out with cash flow by deferring payment of invoices.

Our outputs - Last year

Turfs and facilities:

- The Trustees received two Turf and facility maintenance reports during the year.

Statement of Financial Performance For the year ended 31 December 2019

	2019	2018	Notes
	\$	\$	
Income			
Interest Income	852	261	
WHA Lease Income	164,432	157,829	
WHA Capital Contribution	25,000		
Other Income	90,000		
Total Income	280,284	158,090	
Less: Direct Expenses			
Direct Expenses			
Lease / Rental	108,105	98,211	
Maintenance	25,910	5,484	
Total Direct Expenses	134,015	103,695	
Gross Profit	146,269	54,395	
Less: Expenses			
Audit Fee Expense	6,412	7,500	
Finance & Banking	41	42	
Insurance	36,445	34,722	
Other Expenses	10,056	13,480	
Total Expenses	52,954	55,744	
Net (Loss) / Surplus for the year before depreciation and amortisation	93,315	(1,350)	
Depreciation / Amortisation	151,553	152,923	4 & 5
Net (Loss) / Surplus for the Year	(58,238)	(154,273)	

**Statement of Financial Performance
For the year ended 31 December 2019**

	2019	2018	Notes
	\$	\$	
Income			
Interest Income	852	261	
WHA Lease Income	164,432	157,829	
WHA Capital Contribution	25,000		
Other Income	90,000		
Total Income	280,284	158,090	
Less: Direct Expenses			
Direct Expenses			
Lease / Rental	108,105	98,211	
Maintenance	25,910	5,484	
Total Direct Expenses	134,015	103,695	
Gross Profit	146,269	54,395	
Less: Expenses			
Audit Fee Expense	6,412	7,500	
Finance & Banking	41	42	
Insurance	36,445	34,722	
Other Expenses	10,056	13,480	
Total Expenses	52,954	55,744	
Net (Loss) / Surplus for the year before depreciation and amortisation	93,315	(1,350)	
Depreciation / Amortisation	151,553	152,923	4 & 5
Net (Loss) / Surplus for the Year	(58,238)	(154,273)	

**Statement of Financial Position
As at 31 December 2019**

	2019	2018	Notes
	\$	\$	
Current Assets			
Cash at Bank	49,902	307,473	
Term Deposit	70,000		
Prepayments	29,290	12,135	
Accounts Receivable	189,097		
Goods & Services Tax	25,180	(17,905)	
Advance - Wellington City Council	683		
Total Current Assets	364,152	301,703	
Non-Current Assets			
Fixed Assets			
Maldstone Park Contribution	1,693,207	2,026,580	4
	463,638	481,818	5
Total Non-Current Assets	2,356,845	2,508,398	
Current Liabilities			
Accounts Payable	39,310	32,079	
Porirua City Council Loan	(89)	39,311	
Transfer between accounts	20,398	(89)	3
Goods & Services Tax	59,619	71,301	
Total Current Liabilities	115,313	134,498	
Long Term Liabilities			
Porirua City Council Loan 1	83,579	101,442	3
Porirua City Council Loan 2	31,734	33,056	3
Total Long Term Liabilities	115,313	134,498	
Net Assets	2,546,065	2,604,303	
Trust Funds	2,546,065	2,604,303	

This is represented by:

[Signature] Chairman
[Signature] Trustee
 10/3/20 Date

The accompanying notes form part of and are to be read in conjunction with these Financial Statements.

Notes to the Performance Report For the year ended 31 December 2019

1. Statement of Accounting Policies

Reporting Entity

The performance report presented here is for the reporting entity Wellington Region Hockey Stadium Trust - "The Trust".

Reporting Basis

Wellington Region Hockey Stadium Trust has elected to apply Public Benefit Entity Simple Format Reporting - Accrual (Not-for-profit) on the basis that it does not have public accountability and has total annual expenses equal or less than \$2,000,000. All transactions in the Performance report are reported using the accrual basis of accounting. The Performance Report is prepared under the assumption that the entity will continue to operate in the foreseeable future.

Wellington Hockey Management Fee

The management fee received from Wellington Hockey Association is determined through the Management contract between the two entities. The lease income is recognised on issue of invoice, in the 2019 year 100% was invoiced in November with payment

Measurement Base

The measurement base adopted is historical cost.

Accounts Receivable

Accounts Receivable are stated at expected realisable value.

Fixed Assets

Fixed assets are stated at cost less accumulated depreciation.

Depreciation

Depreciation is charged at rates considered appropriate for the expected life of the assets taking into account the location and use of The rates are as follows:

- NHS Administration, Fraser Park Buildings, Ground works etc excluding Turf 20-28.8% Diminishing value
- Turf Equipment 10% Straight Line
- Artificial Turf 12.5-15% Diminishing value
- Lighting Equipment 5% Straight Line
- Dugouts

Goods and Services Tax

The financial statements have been prepared using GST exclusive figures except Accounts Receivable and Payable and Statement of Cash Flows which are stated GST inclusive.

Changes in Accounting Policies

There were no changes in 2019. All policies have been applied on bases consistent with those used in the prior year.

Notes to the Performance Report (Continued)
For the year ended 31 December 2019

Income Tax

The Trust is a registered charity under the Charities Act 2005, and accordingly is exempt from Income Tax under section CW 41.8. CW 42 of the Income Tax Act 2007.

2. Nature of Business

The Trust's nature of business is Asset Stewardship and strategic development of hockey facilities. Previous operational aspects of the Trust's business are now carried out by Wellington Hockey Association in accordance with the Management Contract between the two organisations.

3. Term Loans

The Trust only borrows to facilitate the development of facilities for hockey players. The Porirua City Council has made the funding available for specific physical developments on favourable terms. No borrowing is undertaken for administration or operating expenses.

Porirua City Council

There are two interest free loans from Porirua City Council. The first interest free loan has a term of fifteen years from May 2007.

Principal is repaid in semi-annual instalments of \$18,333. The second interest free loan of \$39,666 was for the completion of the Eidsdon turf recarpet. This is to be repaid in semi-annual instalments of \$1,322 for fifteen years from September 2017.

4. Fixed Assets

All development costs have been capitalised and depreciated where applicable. The facilities are on land leased from Councils with lease terms of between 8 to 15 years.

	2019	2018
NHS Changing Rooms and Dugouts		
Opening Book Value	\$ 542,206	\$ 560,965
Depreciation	(18,601)	(18,759)
Book Value	523,605	542,206
Fraser Park Complex		
Opening Book Value	\$ 605,061	\$ 667,915
Depreciation	(62,689)	(62,854)
Book Value	542,372	605,061
Eidsdon Park		
Opening Book Value	\$ 879,313	\$ 932,445
Depreciation	(52,083)	(53,132)
Book Value	827,230	879,313

Independent auditor's report

To the Trustees of the Wellington Region Hockey Stadium Trust

Opinion

We have audited the accompanying performance report of the Wellington Region Hockey Stadium Trust on pages 3 to 11, which comprises the entity information, the statement of service performance, the statement of financial performance and statement of cash flows for the year ended 31 December 2019, the statement of financial position as at 31 December 2019, and the statement of accounting policies and notes to the performance report.

In our opinion:

- the reported outcomes and outputs, and quantification of the outputs to the extent practicable, in the statement of service performance are suitable
 - the accompanying performance report presents fairly, in all material respects:
 - the entity information for the year then ended
 - the service performance for the year then ended, and
 - the financial position of the Wellington Region Hockey Stadium Trust as at 31 December 2019, and its financial performance, and cash flows for the year then ended
- in accordance with Public Benefit Entity Simple Format Reporting – Accrual (Not-For-Profit) issued by the New Zealand Accounting Standards Board.

Basis for Opinion

We conducted our audit of the statement of financial performance, statement of financial position, statement of cash flows, statement of accounting policies and notes to the performance report in accordance with International Standards on Auditing (New Zealand) (ISAs (NZ)), and the audit of the entity information and statement of service performance in accordance with the International Standard on Assurance Engagements (New Zealand) ISAE (NZ) 3000 (Revised). Our responsibilities under those standards are further described in the 'Auditor's responsibilities for the audit of the performance report' section of our report.

We are independent of the Wellington Region Hockey Stadium Trust in accordance with Professional and Ethical Standard 1 (Revised) 'Code of ethics for assurance practitioners' issued by the New Zealand Auditing and Assurance Standards Board, and we have fulfilled our other ethical responsibilities in accordance with these requirements.

We believe that the audit evidence we have obtained is sufficient and appropriate to provide a basis for our opinion.

Other than our capacity as auditor we have no relationship with, or interests in, the Wellington Region Hockey Stadium Trust.

Other matter

The financial statements of the Wellington Region Hockey Stadium Trust for the year ended 31 December 2018, were audited by another auditor who expressed an unmodified opinion on those statements on 26 March 2019.

5. Maidstone Park Contribution

The Trust has contributed \$600,000 (excluding GST) to the Upper Hutt City Council for a turf facility constructed in 2012. Previously this has been amortised at 5% straightline as the useful life has been identified as 20 years. In 2016 the expected useful life was extended to 33 years, on the basis that the Trust will extend the lease with Upper Hutt City Council to its full duration.

	2019	2018
Cost	\$	\$
Amortisation	481,818	500,000
Book Value	(18,180)	(18,182)
	463,638	481,818

6. Lease Commitments

The Trust entered into a lease commitment with Upper Hutt City Council on 1 July 2012 for a period of twenty years with two rights of renewal totalling thirteen years. The lease commitments are \$4,000pa for year one rising in equal increments to \$12,000pa in year five and then the annual payments are adjusted by the movement in the CPI until the turf is replaced.

After the first year of the first renewal of the turf the lease payment of \$30,000pa is adjusted annually by the movement in the CPI.

7. Related Parties

The Trust and Wellington Hockey Association entered into a Management Contract as of 1 January 2014. This contract gave WHA control of the Trust's assets for a fee outlined in the agreement. During 2019 the Trust received \$164,432 (2018: \$157,829) in management fees. The Trust received a \$25,000 Capital Contribution during the 2019 year. In the 2018 year, the Trust agreed to forgive the Capital Contribution amount of \$75,000 during the year.

8. Trust Funds

	2019	2018
Opening Trust Funds	\$	\$
Net (Loss) / Surplus for the year	2,604,303	2,758,574
Closing Trust Funds	(58,238)	(154,271)
	2,546,065	2,604,303

9. Contingent Liabilities

There are no contingent liabilities at balance date. (2018: Nil)

10. Subsequent Events

The trustees are not aware of any events after balance date that have significant or may significantly affect the operations of the Association.

Other information

The Trustees are responsible for the other information. The other information comprises the information included in the directory, but does not include the financial statements, entity information and statement of service performance, and our auditor's report thereon.

Our opinion on the performance report does not cover the other information and we do not express any form of audit opinion or assurance conclusion thereon.

In connection with our audit of the performance report, our responsibility is to read the other information and, in doing so, consider whether the other information is materially inconsistent with the performance report or our knowledge obtained in the audit or otherwise appears to be materially misstated. If, based on the work we have performed, we conclude that there is a material misstatement of this other information, we are required to report that fact. We have nothing to report in this regard.

Responsibilities of the Trustees for the performance report

The Trustees are responsible for:

- a) Identifying outcomes and outputs, and quantifying the outputs to the extent practicable, that are relevant, reliable, comparable and understandable, to report in the statement of service performance
- b) the preparation and fair presentation of the performance report on behalf of the Wellington Region Hockey Stadium Trust which comprises:
 - the entity information
 - the statement of service performance; and
 - the statement of financial performance, statement of financial position, statement of cash flows, statement of accounting policies and notes to the performance report in accordance with Public Benefit Entity Simple Format Reporting – Accrual (Not-For-Profit) issued by the New Zealand Accounting Standards Board, and
- c) for such internal control as the Trustees determine is necessary to enable the preparation of the performance report that is free from material misstatement, whether due to fraud or error.

In preparing the performance report, the Trustees are responsible on behalf of the Wellington Region Hockey Stadium Trust's for assessing the Wellington Region Hockey Stadium Trust's ability to continue as a going concern, disclosing, as applicable, matters related to going concern and using the going concern basis of accounting unless the Trustees either intend to liquidate the Wellington Region Hockey Stadium Trust or to cease operations, or have no realistic alternative but to do so.

Auditor's responsibilities for the audit of the performance report

Our objectives are to obtain reasonable assurance about whether the performance report is free from material misstatement, whether due to fraud or error, and to issue an auditor's report that includes our opinion. Reasonable assurance is a high level of assurance, but is not a guarantee that an audit conducted in accordance with ISAs (NZ) and ISAE (NZ) 3000 (Revised) will always detect a material misstatement when it exists. Misstatements can arise from fraud or error and are considered material if, individually or in the aggregate, they could reasonably be expected to influence the decisions of users taken on the basis of the performance report.

As part of an audit in accordance with ISAs (NZ) and ISAE (NZ) 3000 (Revised), we exercise professional judgement and maintain professional scepticism throughout the audit. We also:

- Identify and assess the risks of material misstatement of the performance report, whether due to fraud or error, design and perform audit procedures responsive to those risks, and obtain audit evidence that is sufficient and appropriate to provide a basis for our opinion. The risk of

not detecting a material misstatement resulting from fraud is higher than for one resulting from error, as fraud may involve collusion, forgery, intentional omissions, misrepresentations, or the override of internal control.

- Obtain an understanding of internal control relevant to the audit in order to design audit procedures that are appropriate in the circumstances, but not for the purpose of expressing an opinion on the effectiveness of the Wellington Region Hockey Stadium Trust's internal control.
- Evaluate the appropriateness of accounting policies used and the reasonableness of accounting estimates and related disclosures made by management.
- Conclude on the appropriateness of the use of the going concern basis of accounting by the Trustees and, based on the audit evidence obtained, whether a material uncertainty exists related to events or conditions that may cast significant doubt on the Wellington Region Hockey Stadium Trust's ability to continue as a going concern. If we conclude that a material uncertainty exists, we are required to draw attention in our auditor's report to the related disclosures in the performance report or, if such disclosures are inadequate, to modify our opinion. Our conclusions are based on the audit evidence obtained up to the date of our auditor's report. However, future events or conditions may cause the Wellington Region Hockey Stadium Trust to cease to continue as a going concern.
- Evaluate the overall presentation, structure and content of the performance report, including the disclosures, and whether the performance report represents the underlying transactions and events in a manner that achieves fair presentation.
- Perform procedures to obtain evidence about and evaluate whether the reported outcomes and outputs, and quantification of the outputs to the extent practicable, are relevant, reliable, comparable and understandable.

We communicate with the Trustees regarding, among other matters, the planned scope and timing of the audit and significant audit findings, including any significant deficiencies in internal control that we identify during our audit.

This report is made solely to the trustees of the Wellington Region Hockey Stadium Trust. Our audit has been undertaken so that we might state to the trustees those matters we are required to state to them in an auditors' report and for no other purpose. To the fullest extent permitted by law, we do not accept or assume responsibility to anyone other than the trustees, for our audit work, for this report, or for the opinions we have formed.

Kendon's Chartered Accountants Limited

Michael Markham
Director

Lower Hutt

10 March 2020

ADMINISTRATION

Patron and President

Derek Wilshere

Life Members

Rex Manning ONZM (dec)

Rosemary O'Brien

Ken Wood

Dr Rob McIlroy

Richard Taylor

Jan Borren

Margaret McPherson

Derek Wilshere

Jack Grimshaw

Dayle Jackson

Karen Wallace

WHA Board

Sally Morrison (Chair)

Kyle Pontifex (Deputy)

Danella Rennie

Rochelle Roddick

John Thomason

Susannah Sharpe

Gareth Jeune

Anna Rossiter-Stead (Aspiring Director)

Wellington Sport Legends

Peter Miskimmin (2013)

Trevor Manning (2008)

Alan McIntyre (2008)

Suzie Muirhead (2018)

WRHST Trustees

Keith Binnie, Chair

Karen Wallace, Deputy

David Bott

Murray Young

Sam French

Brent Miskimmin

Service Awards

Danella Rennie

Murray Down

Selwyn Waititi

Paddy Frankenberg

Louise Sanson

Warren Devereux

Daniel O'Connell

Mohan Parbhu

Bruce Manning

Rex Manning ONZM

Karen Wallace

Hockey NZ Life Members

Derek Wilshere

Dayle Jackson

Keith Binnie

Rosemary O'Brien

Kevin Towns

Staff

Chief Executives

Karen Wallace (Acting)

Rachel Minton-Smith (Acting)

Peter Drew

Raechel Cummins (Acting)

Lisa Jones - Appointed Dec, 2019

Dane Lett - Head of Hockey

Bjorn Dix - Development Officer

Cat Gooding - Community Hockey Officer

Sue Parrott - Admin and Finance

Sandeep Choudhary - Tournaments & Competitions

Custodians

Devendra Patel - NHS

Rebecca Noble - Elsdon Park

Pedro Garcia - Maidstone Park

Cath Taylor - Fraser Park

ADVISORY COUNCILS

Open Grade

Nicky Sherriff

Dave Jennings

Erin Muxlow

Mohan Parbhu

Andy Jensen

Youth

Julie Schultz

Sue Gall

High Performance

Brent Miskimmin

Peter Miskimmin

Suzie Muirhead

Mark Watson

Mike Chu

Niniwa Roberts

Masters

Arthur Mahon

Neville Parker

Leah Murphy

Ben Everist

Vicki Collins

Ed Rafferty

Rachel Lilley

Umpires

Warren Devereux

Stephen McLachlan

Nathan Waddle

Tom Rutherford

Jane Hirst

Nano Tunnicliff





WELLINGTON HOCKEY ASSOCIATION

9 MOUNT ALBERT ROAD

P.O. BOX 2891

BERHAMPORE

WELLINGTON 6140

PHONE: 04 389 3337

EMAIL: info@wellingtonhockey.org.nz

www.wellingtonhockey.org.nz

Social Media - [@wgtnhockey](https://www.instagram.com/wgtnhockey)