

# WELLINGTON HOCKEY ASSOCIATION

# ANNUAL REPORT 2020

A LIFELONG LOVE OF HOCKEY

MAKING GREAT HOCKEY HAPPEN



# THANK YOU TO OUR SPONSORS AND FUNDERS



Speedy Signs  
grow your business faster



SPORTING EDGE



# Cello.

# CONTENTS



## **03 REPORTS**

Governance  
CEO  
Wellington Regional Stadium Trust  
Tribute to Jack Tynan

## **12 COMMUNITY HOCKEY**

Programmes  
Have a Go  
Fun Sticks  
U11 Hub  
Master's Hockey  
Hutt Valley Sub-Association

## **14 REPRESENTATIVE TEAMS**

Under 18 Men and Women  
Under 15 Boys and Girls  
Under 13 Boys and Girls

## **17 RESULTS AND TEAMS**

Small Sticks  
Secondary  
Open Grade

## **20 ACKNOWLEDGEMENTS**

National Team Honours

## **21 HOCKEY AWARDS**

Wellington Hockey Awards  
Sport Wellington Awards

## **22 ADMINISTRATION**

Life Members  
Staff  
Custodians  
Advisory Councils

## **23 FINANCIAL PERFORMANCE**

Wellington Hockey Association  
Wellington Regional Stadium Trust

# GOVERNANCE REPORT

## Sally Morrison - Chair WHA Board

This 2020 Annual Report will contain the third Wellington Hockey Association Governance report in accordance with the Sport NZ Governance guidance.

The Board of Wellington Hockey must provide structures and decision-making processes that serve us well today and protect, guide and ensure we can provide meaningful services and be kaitiaki's into the future. The Board must take responsibility for our direction and for our key financial and strategic decisions. The Board must also be a critical friend to our CEO.

2020 has been a difficult year as a result of Covid but a year of triumph as hockey continues to recover and is now in a position to grow and flourish. Whilst we cannot take anything for granted with a global pandemic still dominating our plans and conversations, we have real cause for optimism. This is because of the wonderful work of our communities in a year of determined effort to deliver hockey in an uncertain environment.

In January this year I was preparing a speech for the AGM that talked to our recovery as an organisation, a budget that was back in the black, a new CEO, good processes in place and a strong Board. Then of course Covid arrived and we were fundamentally challenged by "what will happen next"? Will we get a season at all? Lisa and the Finance and Risk Committee, with Raechel Cummins met multiple times each week planning each possible scenario depending on what might happen. The Government stepped in, funding landed and then, to the relief of every single one of us, we had our season. Coming out of lockdown it seemed like the most glorious thing- to be able to come together and play our sport... to talk, laugh, relate and to run around.

WHA is now out of the woods financially having recovered from a position of significant debt in 2018/2019. We now have our players fund if players are in financial difficulty. We have a new structure that has pivoted wholly towards our custom-

ers and players. We have a great CEO and a strong Board. Summer Hockey has seen a 100% increase in participation (adult teams have increased from 26 to 56 this season).

I want to take this important opportunity to thank so many people – first and foremost – all of our clubs – the vast majority of folks who deliver our sport are unpaid volunteers and you make the choice to provide what you do – thank you.

Thank you to our staff who worked really hard in very difficult circumstances during lockdown and then Level 2. Special thanks to Lisa who stayed strong and calm throughout what was an exhausting and difficult time all the while wondering if WHA could even afford to pay her wage.

Thank you to our Board, all volunteers, thank you also to Jo xx our accountant who works on our finances through a Sport Wellington funded initiative and produced budget after budget so we could make up to date decisions about necessary changes.

Thank you Gareth, with support from Molly and Danella you oversaw our Health and Safety response, our risk framework was used as a best practice example by Sport Wellington – as was our overall response.

The future is bright for Hockey in Wellington. Your new WHA structure is here to serve you. The review that will come through soon will ask you what playing hockey needs to look like to you, the change you want to see, what you want the future to look like. We will be targeting our tamariki and rangitahi and bringing them in numbers into hockey. We will govern responsibly and deliver positive change. And if 2020 has a legacy it will be that we will all remember what it is to celebrate one another and to play this sport together.

# GOVERNANCE REPORT CONTINUED

## Strategy and Risk

WHA has continued to work through our strategy and the 2021 business plan sees us get to a granular level of detail to ensure it is delivered.

**Vision:** *Inspiring a life-long love of Hockey*

**Mission:** *Making great hockey happen*

### Outcome Statements:

- *More people enjoying the whole hockey experience for longer*
- *Opportunities for all to participate, grow and excel*
- *Strong and sustainable hockey in Wellington*

*A modern, technology-enabled, innovative and customer-focused organisation*

### Strategy Statement:

*WHA is a strong, sustainable, transparent and professional organisation with good governance, strong financial management and clear priorities.*

*WHA is a trusted, reliable community partner. We are here to support our community.*

## Our Values

### Hockey Whanau

*We put people at the centre of our purpose, treating everyone, always, with care and respect. We're a family, a whanau, a team and a community.*

### Enjoyment

*We love hockey and enjoy our involvement in the sport. We have fun and want others to have fun, to ensure a quality hockey experience.*

### Integrity

*We're honest and truthful in dealing with others. We are open, transparent and real. We take responsibility for our words and actions and hold each other accountable.*

### Strive for Excellence

*We bring our passion and commitment to the sport of hockey, and its people. We always strive for excellence and take genuine pride in everything we do and how we do it.*

### Inclusive

*We can achieve so much more together, when we are united. We share our knowledge and successes, so everyone achieves more.*





# GOVERNANCE REPORT CONTINUED

## Standards and Policies

The WHA Board Governance Subcommittee is committed to building an organisation that is sustainable and doing this through good governance. Appropriate guidance and policies must be in place for this to be a reality and this Board is now in a strong position with the majority of the organisations policies now in place and on file ready for ongoing review by the Board and staff.

## Gratitude

The CEO report in this Annual Report will be a more fulsome account of the year and our undertakings as a business and the changes that have occurred in 2020.

The Board do however want to take this opportunity to acknowledge the passion and commitment of the many hockey administrators, players, volunteers, supporters, officials, governors and enthusiasts. Without you, this sport which we celebrate so much, would not exist here in Wellington: thank you. We want to acknowledge too our many partnerships with, for example Hockey New Zealand, our fellow associations, our commercial friends, notably the support of Brian Drake, Ricoh, Cello, MyActionReplay, Kapiti and McDonalds Newtown and our many stakeholders such as our City Councils and the WRHST, each of whom contribute to the success of this game across the region.

We thank Lisa for her work and dedication to hockey in Wellington, she has been a significant contributor to our success in 2020.

Kyle Pontifex and Danella Rennie our elected members have worked countless hours for their community and are tireless in their commitment to Hockey in our Region. Rochelle Roddick has led the charge with Raechel Cummins and now Molly Powers as we recover financially and establish sound processes to avoid the pitfalls of 2018. Prabha Ravi joined us in September as an appointed Director. Prabha has wonderful connections into our Indian community and deep experience across sport in Wellington. John Thomason continues on the Board and has played key roles in a number of areas including recruitment. Derek Wilshere continues as our president and taonga and attends the Board meetings (by bus from Eastbourne) providing exceptional guidance. Sam French and Keith Binnie have attended as Attendees from the Trust and have ensured that the WHA Board and WRHST have worked closely and constructively together. Thank you.

At our last Board meeting in December Gareth Jeune, well known Club Hockey man, decided to step down from the Board as well as Anna Rossiter-Stead (Aspiring Director) University student and former player. We are very grateful for the contribution both these governors have made for WHA.

At the March AGM I will step down as Chair and put a motion to the Board to elect Kyle Pontifex as our new WHA Chair. It has been a busy and at times difficult role to chair WHA but I can say without reservation I have been honoured to take this on and to work with an incredible bunch of people who deliver many unpaid hours to put guiderails in place, support our CEO and ensure we are kaitiaki/ stewards for our sport.

# Board Composition as at 31 December 2020



## **Sally Morrison: Chair**

Sally joined the Board in August 2018 and was elected Chair shortly afterwards. She has been involved in sports governance or club administration in Wellington for 30 years and was a Director on the Cricket Wellington Board from 2009 and Chair from 2016 until her retirement in 2019. Sally has held senior leadership and strategy roles across the Public Sector. She has a Master's Degree in Strategic Studies (Dist) from Victoria University. In 2019 Sally was the recipient of the Sport Wellington Leadership award.



## **Kyle Pontifex: Deputy Chair**

Having played 100 matches for Wellington/Capital NHL, and having had a 15-year international career, Kyle has a wealth of high-performance knowledge and experience in the sport. Additionally, Kyle brings a strong business acumen and a strategic management approach gained from studies in Business Administration (MBA), and an 19-year professional career in technology and banking.



## **Danella Rennie**

Danella was elected as a club representative on the Board in 2016. A long-time member of our hockey community being just about to commence her 35th year of playing for her club Upper Hutt. Danella has been involved in all aspects of hockey over this time spending many years umpiring and mentoring umpires. She has previously been involved in coaching and was part of our Judicial Council and the Open Grade Council. She wants to be a voice for the clubs on the Board by ensuring that they are heard right to the top.



## **Rochelle Roddick**

Rochelle joined the Board in November 2018. She is a Partner in international accounting and business advisory firm, FINDEX, and has over 25 years' experience in advising businesses and not-for-profits. Rochelle has a Bachelor of Commerce and Administration from Victoria University of Wellington, is a chartered accountant (CA) and holds a certificate of public practice. She is also involved in sports coaching and administration.



## **John Thomason**

John joined the Board in February 2019. A transplant from the United States, he has served on numerous charitable boards over several decades and across many service areas. John has held senior leadership roles in capital markets, banking, and the nonprofit sector. He is currently the COO of an independent school in Wellington. John has a Masters degree in Public Policy and an MBA, as well as a passion for hockey.



## Susannah Sharpe

A member of the Board since 2018, Susannah holds a Masters of Business Administration (MBA) with distinction - including research into economics and system dynamics theory with a case study of emerging technology in electricity sector and regulation. She has considerable knowledge of the energy and infrastructure sectors, and is experienced in strategy and stakeholder engagement, regulatory/legal and risk, business planning, internal assurance and compliance programmes. Susannah has a BA/LLB from Victoria University and is a Regulatory Proposal Manager/Senior Counsel at Chorus. Susannah attended all board meetings before leaving the Board in April of 2020.



## Gareth Jeune

Gareth joined the Board in a co-opted role in December 2019. Having played hockey over the last 20 years, he has been connected to various committees during that time, including the reestablishment of Tawa Hockey Club over the last 6 years. He is interested in how WHA can best serve the hockey community and provide equal opportunities to the diversity that our communities represent. Additionally, Gareth brings 13 years' experience in Risk and Project Management. Gareth Left the board in December of 2020



## Anna Rossiter-Stead (Aspiring Director)

Anna joined the Board in December 2019 as an Intern Director. She holds a Bachelor of Commerce from Victoria University, with a double major in Marketing and Commercial Law. Anna has grown up around hockey, representing Wairarapa and going on to captain her college team. Her focus is on developing how the Board communicates and engages with its community. Anna left the board in December of 2020



## Molly Powers

Molly joined the Board in April 2020. She is an avid hockey player with an extensive expertise offering legal counsel and sport governance. Molly competed in Division-1 field hockey at the University of Michigan and graduated with a Bachelor of Arts (History) before attending DePaul University of Law and graduating magna cum laude with a doctorate in Jurisprudence. Molly also played for the USA National team and at club level in Dublin, Ireland.



## Prabha Ravi

Prabha is committed to helping public and not-for-profit sector organisations and private businesses grow to their full potential through best practice governance. In the past 10 years, she has provided a sustainable long term vision and strategic direction to the boards she has served. She has a strong background in strategy and business development and deep experience in the education, art and culture industry. She is well connected with the wider community across the Wellington region in the sports, health, education, arts and culture sector. She holds a Masters degree in Public Administration and is an independent director and a management consultant. She is also the founder, director and choreographer of Natraj School of Dance, an classical Indian dance school based in Lower Hutt for the past 23 years



## Sub Committees

Subcommittees	Role	Membership
Finance and Risk Committee	Provide advice and assistance to the Board in relation to the efficient governance, financial and risk management of the organisation, the ethical behaviour and the overall performance of Wellington Hockey	Rochelle Roddick (Chair) Molly Powers Sally Morrison  Jo our accountant who is supplied by the Sport Wellington Central Support Platform
Chief Executive Employment Committee	Assist the Board to ensure that there is an effective and positive partnership between the Board and its Chief Executive. Recruit the CEO and performance manage/ assess the CEO	Kyle Pontifex (Chair) Sally Morrison
Governance Committee	Assist the Board in discharging its responsibilities for the smooth functioning of the Board's systems, in particular, policy formation, recruitment, Board and director performance assessment, and professional development	Rochelle Roddick (Chair) Danella Rennie Sally Morrison
Councils Committee	Rejuvenate and support WHA Councils	Kyle Pontifex (Chair) Danella Rennie Gareth Jeune

### Cost of Governance

All Directors undertake their roles voluntarily. There are no other costs associated with Governance

BoardPro the Board Software tool is provided free of charge very generously by BoardPro

### Appointment processes

Please see Rules 9 - 13 of the Wellington Hockey Association Rules where this process is clearly set out

### Governance evaluation and performance

The Governance Committee has oversight of this important role

## Meeting Attendance

Date	Sally Morrison	Kyle Pontifex	Danella Rennie	Rochelle Roddick	John Thomason	Molly Powers	Prabha Ravi	Gareth Jeune	Anna Rossiter-Stead
Jan	Y	Y	N	Y	Y	Y	N	Y	Y
Feb	N	Y	Y	Y	Y	Y	N	Y	Y
March	Y	Y	Y	Y	Y	Y	N	Y	Y
April	Y	Y	Y	Y	Y	Y	N	Y	Y
May	Y	Y	Y	Y	Y	Y	N	Y	Y
June	Y	Y	Y	N	Y	Y	N	Y	Y
July	Y	Y	Y	Y	Y	Y	N	Y	Y
August	Y	Y	N	Y	Y	Y	N	Y	Y
September	Y	Y	Y	Y	Y	Y	N	Y	Y
October	Y	Y	Y	Y	Y	Y	N	Y	Y
Nov	N	Y	Y	Y	Y	Y	Y	Y	Y
Dec	-	-	-	-	-	-	-	-	-

# CEO REPORT

Lisa Jones

I started at Wellington Hockey on the 21<sup>st</sup> January 2020, and two months later was faced with the scary scenario that we were closing down the office to work from home due to Covid 19, with no idea if, or when, we would be back again.

During the period of lockdown we all got used to a new world where Zoom calls became the “new normal” and planning, then replanning and then replanning again, became a fact of life as things changed at a rapid pace.

During that time, I learnt what a wonderful community we have here at Wellington Hockey.

Everyone put their faith in the “new CEO” and not only waited patiently for any news to come through about when we might be able to get started, but also worked very quickly when we did get the news we could go ahead, to put teams together, and get the community back on the turf as quickly as possible. I would like to thank everyone for their hard work over that period, it was very much appreciated by everyone at Wellington Hockey and especially me.

The season itself was really short and sharp, with 17 weekends of Hockey going ahead. It was pleasing to see how happy everyone was to be back out on the turf, and a real reminder that Hockey is about so much more than the results. Watching the pleasure people had in reconnecting with teammates after such a testing time was a real highlight of the year for me.

We did not manage to get any representative Hockey played in 2020, with all tournaments being cancelled early on, but we are looking forward to seeing our teams out there again representing Wellington in 2021.

I would like to thank the umpires for all their hard work over the season. They are such an important part of our community and their efforts and professionalism are appreciated by us all.

I have really enjoyed working with the hard-working staff at Wellington Hockey. During a period of extreme uncertainty regarding their own employment, their unwavering commitment to making Hockey happen was a credit to them and a big part as to why we had such a successful season. The Health and Safety aspects alone of getting the facilities open for play were significant but they all went above and beyond and I am very grateful to them for that.

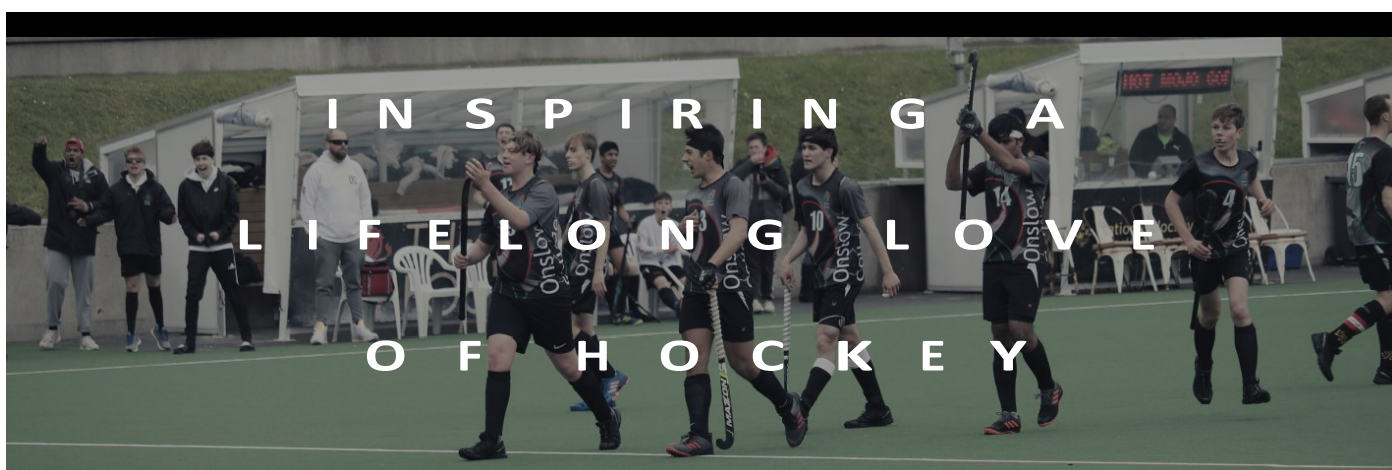
A huge thank you to our sponsors and funders without whom we would not be able to operate and deliver Hockey to the Wellington region.

Lastly, to everyone who sits on a club committee, volunteers in any capacity, coaches, manages a team, sits on a council or in any way helps to get Hockey happening in our community I thank you very much. The amount of time spent getting teams on the turf every weekend is significant and is appreciated by everyone here at Wellington Hockey.

I look forward to seeing everyone out on the turfs again in 2021. Here’s to a more settled year ahead.

Lisa Jones

CEO, Wellington Hockey



# Wellington Regional Hockey Stadium Trust Report 2020

2020 was again a relatively quiet year for the Trust as we were focused primarily on supporting WHA get through a Covid year. As reported last year, the Trustees have taken the view that it was the right thing to do for hockey in its hour of need and even though the Trust's funds are earmarked for capital projects and new facilities related expenses and investment, we have taken steps to support WHA with some maintenance costs as it was important that some of it went to the area of greatest need.

With WHA having finished the year with a strong financial result through the great work of the Board and Management and the support of key stakeholders like WCC and Sport Wellington, the Trust's focus can now return to more strategic priorities and working with WHA to ensure that it can meet the needs of its community from a facilities perspective. Clearly our first priority will be the replacement of the turf at Fraser Park in 2021/22.

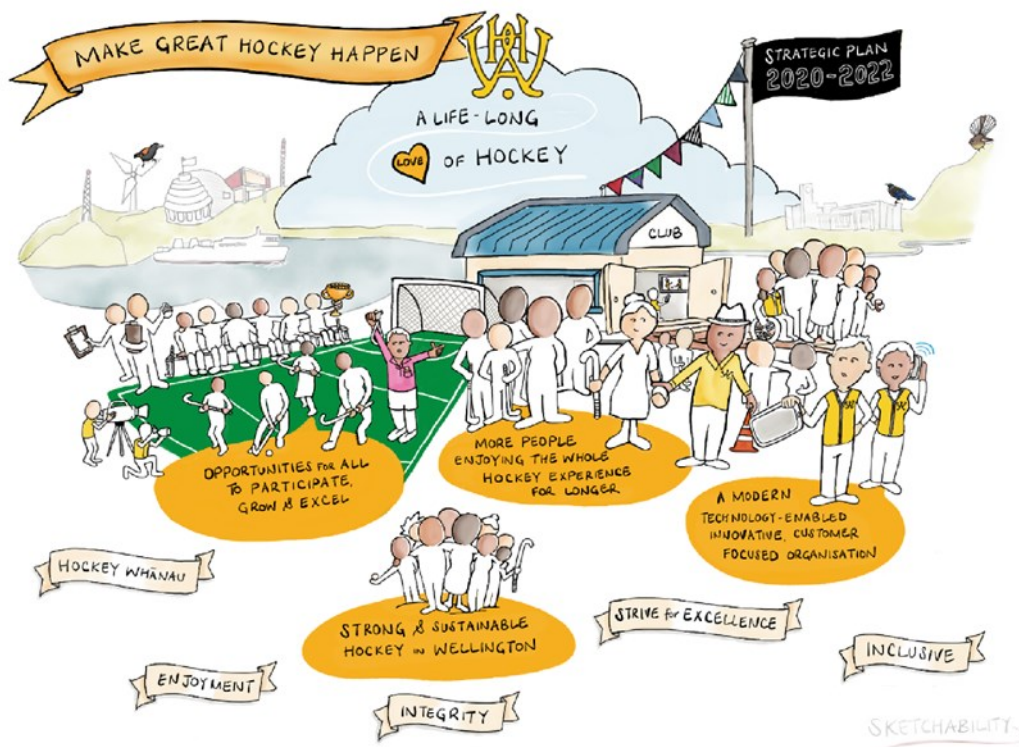
Finally, in relation to the financial performance of the Trust, we are looking at posting a deficit of \$76,765 for the 2020 financial year. This was against a budgeted deficit of \$37,243. There was a \$20,000 increase in insurance as it should be remembered that WCC had offered to forgive \$50k in each of 2019 and 2020. The auditors have said that \$90k needs to be recognised in 2019 and \$10k in 2020.

Finally thanks to all Trustees for your help during the year but particularly to Sam French for stepping up for me last year while I was busy on a bunch of other sporting Covid issues.

Best wishes to you all for the 2021 season.

Keith Binnie

Chairperson



# John Christopher (Jack) Tynan

5 December 1925 - 23 August 2020

With the passing of Jack Tynan New Zealand lost one of its truly great generational athletes.

Jack made his senior debut for Karori at 17 years-old in 1943 and played in Wellington's premier competition for the next 15 years. Over that time Jack led Karori to eight championships and they finished second six times.

The teams Jack coached and captained through the 1950's were very well prepared, winning the Challenge Shield in 1952 and 1953. Internationally, over this period his Wellington team drew with Australia in 1952 (0-0) and lost narrowly to the Indian Wanderers (1-2) in 1955.

Jack was selected to play right half in a hastily assembled New Zealand team in 1948. Coached and captained by Cyril Walter. They lost their one test to Australia in Dunedin (2-3) but Jack became an advocate for Walter's hockey philosophy, and they remained close friends.

Jack subsequently became a regular fixture as captain/coach for the New Zealand side until 1956. In the 13 matches played between 1948 and 1956 Jack led the national men's side to a record of 5 - 8.

A highlight of this period was the 1955 tour by the Indian Wanderers which featured legendary Indian Olympic gold medalists K.D. Singh (Babu), Balbir Singh, R.S. Gentle and Leslie Claudius. After New Zealand lost the first test in Wellington (2-3) Jack devised a cunning strategy to disrupt the flow of attacking ball from the Indian right-back Gentle to inside right Babu Singh, from which a majority of Indian attacks were mounted. Jack asked the New Zealand fullback, Wellington's Reg Johansson to advance and mark Babu closely. It worked, and New Zealand won the second test in Auckland 4 - 2 with Jack scoring from a penalty bully. The Wanderers bounced back and won the final test in Auckland 2 - 0.

Perhaps Jack's greatest honour was captaining in New Zealand's first Olympic Hockey Team in Melbourne in 1956. For the very well-prepared and capable New Zealand team it was a baptism by fire.

The players experienced a more liberal interpretation of the rules that allowed more body play, obstruction and challenges to the close skills of players honed by application of the methods of Indian teams. It was tough but the team adapted well, gaining wins over Belgium twice (3 - 0 and 3 - 2) and Singapore (13 - 0); with losses to Pakistan (1 - 5), Australia (0 - 1) and Germany (4 - 5) in a critical pool game. Jack later recalled with anger that against Germany two goals from penalty corners were ruled out for illegal hand stops after German protests to the Indian umpires. There were no video umpires in those days, but film footage shows the stops were clearly legal. New Zealand finished sixth with India winning the gold. Jack then retired from International Hockey and was one of the last surviving Olympians from those games.



He was clearly the New Zealand Hockey player of the 1950's.

Coaching remained a passion for a busy Jack and he coached Wellington teams until the early 1960's, with a 2 - 2 draw in 1961 against All India and again in the Challenge Shield Tournament 1969 (2nd) and 1970 (lost semifinal)

His hand/eye coordination, strength and speed also made him well suited to cricket in which he represented Wellington in the early 1950's, and golf which he continued to play for many years.

His achievements are recognised by his induction as a Legend of Wellington Sport in 2007.

His hockey legacy is carried on by his sons Mark and Pater, each of whom played for Canterbury and New Zealand, as well as New Zealand Universities.

He was a very staunch, loyal, and principled man with admirable integrity and sense of fair play, respected by all he played with, against and those he coached.

# COMMUNITY HOCKEY

## Wellington Hockey Programmes

Even with an interrupted year, Wellington Hockey was still able to offer a hockey experience to over 5000 young players in primary schools in the greater Wellington region. The Small Sticks In School Programme has been positively received by our partner schools over many years. Due to ongoing funding restrictions, our delivery of this programme will become more targeted in 2021 as we endeavour to build better pathways to help transition interested into hockey.

In addition to the Small Sticks In Schools Programme, Wellington Hockey offered 'Taster Sessions' to schools and kindergartens. The one-off taster sessions allowed youngsters to try Hockey and provided them with information on how to join our community programmes.



### Have a Go

Have a Go sessions were run prior to the start of the winter season and at the end of the year leading into summer hockey. These 6-week programmes were held at NHS, Hutt and Porirua and were well attended again in 2020. Targeted at primary children looking for an introductory programme to hockey

### Fun Sticks

Fun Sticks programmes again were Hub based and well supported with an increase in numbers on 2019. We delivered a fun, engaging and interactive programme that worked to build and develop young players love of Hockey.

### U11 Hub

U11 Hub continued despite the challenging year. Over 90 young players from the Kapiti, Hutt, Elsdon and NHS Hubs came together for two festivals. One in Kapiti which included our friends from the Wairarapa, and another one at Fraser Park. Thank you to all the volunteer coaches, managers and umpires who helped ensure our young people had a fantastic experience.



# COMMUNITY HOCKEY

## Master's Hockey

When the regular hockey season finishes, the Masters hockey season begins.

It starts with an eight week local competition featuring 8-10 women's and men's teams. While teams are generally comprised of regular season players wanting play against those of similar age, we are seeing an increasing number of players that have not been on the turf for a while joining in for the fun of it.

Club allegiances don't matter so much (combined teams are common) and the social side is enhanced by the gatherings in the pavilion after the game.

The 2021 season showed a big increase in the numbers staying on after the game which could be a reaction to lockdown but also through running the men's and women's games on the same night and insisting the bar was open. It was great for the community to connect and to see so many people enjoying post-match catch-ups.

Wellington teams were selected near the end of the local competition for representation at the March 2021 National Masters Tournament Tauranga.

2020 saw the National Masters Tournament (NMT) held in Christchurch. Wellington had eight teams in the competition - six in the men's competition and two in the women's. NMT is the largest tournament in NZ and the week proved to be full of quality hockey with Wellington sides competing against some tight competition across all grades.

To accommodate increasing interest of players seeking to attend NMT in the men's grades a more robust "play to age" model was implemented. This proved successful having strong teams across all the men's grades with both the M50 and M60 won gold in their finals. The M50 took out their final 2-1 in shootouts while the M60 won 3-1 against Auckland.

On the women's side low player numbers limited the teams to two. That said it was great to have the teams competing with the W50s put up a good fight in a tough competition. The W35s took out gold in their age grade beating Malvern in the final 2-0.

Overall a great week away playing the sport we love. Final results across all age grades were:

### *Women's Masters*

W35 - First

W50 - Fifth

### *Men's Masters*

M35 - Fourth

M40 - Fifth

M45 - Third

M50 - First

M55 - Third

M60 - First

Neville Parker

Master's Advisory Council



# WELLINGTON REPRESENTATIVE TEAMS

In what we all know was a unique year, Hockey NZ made the tough decision to cancel all National Tournaments. Naturally this was received with much disappointment from our aspiring U18 players. As an Association, we felt it was important we still offered a development opportunity for our players and endeavoured to provide an extended training block with the addition of some inter-Association matches with our neighbours.

Following a trial process, we formed two squads and began regular training. We observed genuine improvement in the group at an individual and collective level which was pleasing. Unfortunately, each team was only able to play one match as our other planned matches fell through and it was disappointing not to get the opportunity to test ourselves further. Nevertheless, we started to build a platform that can launch 2021 and with the majority of players returning there is some excitement for the future.

## UNDER 18 BOYS & GIRLS

### GIRLS

Abby Draper  
Ariana Davis  
Bria FitzGerald  
Caitlin Rennie  
Emily Singer  
Emma Brokenshire  
Kat Winter  
Kate Kominik-Fraser  
Lauren Baker  
Maia Kirikiri  
Nika Reichert  
Ruby Baker  
Skylar McClelland  
Sophia Hardie  
Sorita Pho  
Zara Beard

**Coaches** – Bjorn Dix, Esther Chan and Kiri Rakuraku-Akavi

### BOYS

Akaash Morar  
Angus Bowmar  
Benjamin Irvine  
Blake Randall  
Isaac Young  
Joshua Dyer  
Judd Adamson  
Logan Hewitt  
Manaia Woodley  
Matthew Evans  
Nic Spencer  
Rhys Ward  
Robert Apanowicz  
Seth Heuvelmans  
Shakeel Morar  
Xander Redgrave

**Coaches** – Riley Jennings and Alex Grey

# REPRESENTATIVE PROGRAMME

## UNDER 15 BOYS & GIRLS

2020 was to be the last year of National Representative Tournaments for the U13 & U15 age brackets, but Hockey NZ was forced to cancel these in the early part of the year. Wellington Hockey was able to roll out its new In Season Development Programme that has now replaced the traditional representative programmes of the past.

We provided our U13 & U15 players with a festival opportunity and mini tournament experience where they played teams from Horowhenua, Manawatu & Wairarapa. This will transition us nicely for 2021 where we will join other associations from the Lower North Island in creating regional festivals.

### BOYS

Archie Cosslett  
Ben Dudding  
Ben Edwards  
Blake Whitfield  
Camron Neilson  
Declan Story  
Finlay Wood  
Finn Mckay  
Foy Kerkin  
Grayson Dawson  
Hamish Davenport  
Harison Clulow  
Jake Baker  
James O'Brien  
JB Macadre  
Josh Harvey-Green

Jude Anderson  
Matt Crawford  
Matthew Clark  
Matthew Kennedy  
Matthew Parry  
Nathan Underwood  
Ned Dassanayake  
Noam Mckay  
Ollie Bowmar  
Prashaan Ishver  
Sam Woolcott  
Sean Moody  
Thomas Kominik - Fraser  
Thomas Nicholls  
Toby Champion  
Toby Potter

### GIRLS

Agus Mazur  
Amy Murray  
Anna Knackstedt  
Bella Manning  
Bella Willis  
Charlotte Burgess  
Charlotte Dacombe-  
Bird  
Charlotte Giles  
Charlotte Merwood  
Ella Mullane  
Em Allen  
Frances Penney  
Georgie Dennis  
Grace Banks  
Isla McCaw  
Jess Davenport  
Kaelin Spence

Kate Chandler  
Lucy Pottinger  
Maia Patete  
Mathilde Gleissner  
Mckaela Woodward  
Meg Jennings  
Nayomi Thiagarajah  
Nishka Parekh  
Ollie Cornell  
Phoebe Williamson  
Rachel Baker  
Rachel Duston  
Riana Pho  
Savanna Ward  
Sophie Legge  
Sophie McGuigan  
Yasmin Hannan





# REPRESENTATIVE PROGRAMME

## UNDER-13 BOYS & GIRLS

### BOYS

Adam Baker  
Ashton Herrick  
Benjamin Luey  
Calvin Double  
Charlie Brader  
George Schaefer  
Henry O'Brien  
Jack Mahoney  
Jack Mundell  
Jacob Eade  
Jake McLellan  
James Catherwood  
Jock Holmes  
Joe Hall  
Joshua Hamlyn  
Leon Olsen  
Liam Parker  
Liam Taylor  
Louis Barnett

Luka Dunwoodie  
Marcus Locke  
Matthew Knight  
Matthew Redshaw  
Matthew Trolove  
Max Charles  
Peter Annear  
Renn Harper  
Ryan Tutty  
Sammy Scott  
Samuel Agate  
Sonny Fairbairn  
Thomas Agate  
Thomas Merwood  
Tommy Hanna  
Torben Whittle  
Troy Thompson  
Zac Fowler

### GIRLS

Alysha McGrath  
Amelia Pohlen  
Cathy Charles  
Charvarna Williams  
Eliza Ho-Ng  
Ellie Cook  
Ellie MacAvoy  
Ellie O'Brien  
Eva van der Zouwe  
Francine Scott  
Grace Bicknell  
Holly Taylor  
Iris Edwards  
Jane Isaako  
Jayna Parag  
Luca Marshall  
Lucy Turnbull  
Lynmari Lazenby  
Madeleine Wilson  
Maia McKee

Margo Callaghan  
Marne Lourens  
Matilda Dreyer  
Matilda Sipeli  
Maya Carden  
Mia Gibson  
Michelle Charles  
Milla Ehlert  
Montana Cavill-Fowler  
Nadia Beard  
Naomi Shinoda  
Nell Laracy-McCrystal  
Pemma de Wit  
Rheeya Patel  
Ruby Dacombe-Bird  
Samantha Te Awhe  
Sienna Partridge  
Sophia Paviour - Smith  
Sophie Taylor  
Willow Gouge  
Yasmin Rodda



# SMALL STICKS COMPETITION 2020

## TEAM LISTS

At the end of the 2019 season, Hockey NZ announced the plan to transition away from 11 a side hockey at Year 7&8 level to a small sided games format. Wellington Hockey proposed the 7 a side format (6 field players 1 goal keeper) and it was adapted here locally as our competition format. We had positive response to the transition from player feedback and this playing format will remain moving forward. We also made the decision to remove points tables and 'premier' grades for our various year levels.

### **Kiwi sticks Year 5/6 –**

#### **Wellington**

Karori Fitzroy  
QMC Orange  
QMC Grey  
WISC Wolves  
Harbour City Dragons  
Karori Cheshire  
Hutt United 5/6 2  
WISC Jaguars  
Kapiti Warriors  
Kapiti Tomahawks  
Harbour City Phoenix  
Hutt United 5/6 1  
Karori Abbot  
Karori Zetland  
Brooklyn Geckos 5/6 1  
Brooklyn Geckos 5/6 2  
Wadestown Red Sticks  
Karori Rusco  
WISC Pythons

### **Kiwi Sticks Year 5/6 – HUTT**

Jittabugs  
Wainuiomata  
Hutt United Aces  
Upper Hutt Volts  
Naenae/Rata St  
Hutt United House  
Hutt United Macs  
Upper Hutt Tacos  
Hutt United Dolphins  
Hutt United Stars  
Upper Hutt Lightning Bolts

### **Kiwi Sticks year 5/6 – Elsdon**

Northern Pumas  
Toa 5/6  
Rangikura Gold  
Ngaio Gryphons  
Ngaio Thunder  
Tawa Blue 5/6  
Tawa Red 5/6  
Rangikura Black  
Ngaio Dragons  
Northern Tigers  
Northern Panthers

### **KWIK sticks boy's year 7/8**

Hutt United ABC  
Kapiti Turbos  
Karori Astros  
Karori Voltaires  
UHHC 1  
Tawa Gold Boys 7/8  
Karori Scorpions  
Tawa Orange Boys 7/8  
UHHC 2  
Tawa Purple Boys 7/8  
Hutt United 456  
Karori Messines  
Kapiti Superchargers  
Tawa Red Boys  
Northern Cavaliers  
Kapiti Cobras  
Northern Pacers  
Hutt United 123  
Geckos 1  
Karori Cardronas  
WISC Rhinos  
Northern Spartans  
Northern Rangers  
WISC Bears

### **KWIK sticks girl's year 7/8**

Northern Stars  
Northern Mercury  
HCJH Tuis  
Hutt United 456  
Kapiti Panthers  
Marsden  
Tawa Blue Girls 7/8  
Wainuiomata  
Hutt United 789  
Hutt United 123  
Tawa Yellow Girls 7/8  
Northern Comets  
Naenae  
Toa  
Tawa Red Girls 7/8  
WISC Cobras  
Geckos 1 Girls  
St Orans Red  
Karori Deltas  
Karori Sigmas  
Kapiti Wild Cats  
Hutt United 007  
WISC Tigers  
Northern Sky  
Tawa Gold Girls 7/8  
Karori Omegas

### **Mini sticks year 3/4 – HUTT**

Chilton St James 3/4  
Upper Hutt Panthers  
Upper Hutt Tigers  
Wainuiomata 3/4  
Hutt United Jaguars  
Hutt United Panthers  
Naenae/Rata St 3/4

### **Mini sticks year 3/4 – ELSDON**

Northern Thunder  
Toa  
Northern Lightning  
Tawa Red 3/4  
Ngaio Titans  
Tawa Blue 3/4  
Ngaio Manaia

### **Mini Sticks year 3/4 –**

#### **Wellington**

Karori Keas  
Wadestown Yellows  
WISC Leopards  
QMC Pink  
Brooklyn Geckos  
Brooklyn Geckos 2  
WISC Lions

# SECONDARY COMPETITION RESULTS 2020

With a disrupted Secondary Competition in 2020 we delivered a altered season in our Open Grade to allow teams to continue to play. Covid presented challenges in delivering a normal competition and WHA worked closely with schools to get back to competition after lockdown. Formats were rejigged to deliver meaningful competition to our schools and players. A shortened competition was developed and delivered with a focus on having games for students

P1 BOYS	Team	Placing
	Wellington College 1B	1
	Onslow 1B	2
	Scot's College 1B	3
	Hutt Internations Boys School 1B	4
	Rangotai College 1B	5
	Paraparaumu College 1B	6
	Tawa College 1B	7
	Kapiti College 1B	8

P1 GIRLS	Team	Placing
	Wellington Girls College 1G	1
	Paraparaumu College 1G	2
	Queen Margaret College 1G	3
	St Oran's College 1G	4
	Tawa College 1G	5
	Kapiti College 1G	6
	Wellington East Girls College 1G	7
	Samuel Marsden Collegiate 1G	8

P2 BOYS	Team	Placing
	Wellington College 2B	1
	Onslow College 2B	2
	St Patrick's College Silverstream 1B	3
	St Patrick's College Town 1B	4
	Wellington College 3B	5
	Paraparamum College B2	6

P2 GIRLS	Team	Placing
	Aotea College 1G	1
	Wellington Girls College 2G	2
	Hutt Valley High School 1G	3
	Onslow College 1G	3
	Heretaunga College 1G	5
	St Marys College 1G	6

P3 BOYS	Team	Placing
	Heretaunga College 1B	1
	Newlands College 2B	2
	Rangotai College 2B	3
	Wellington High School 1B	4
	Tawa College 2B	5
	Hutt International Boys School 2B	6
	Wellington College 4B	7
	Scot's College 2B	8
	St Patrick's College Silverstream 2B	9

P3 GIRLS	Team	Placing
	Wellington Girls College 3G	1
	Wellington East Girls College 2G	2
	Chilton St James 1G	3
	St Oran's College 2G	3
	Sacred Heart College 1G	5
	Tawa College 2G	5
	Naenae College 1G	7
	Samuel Marsden Collegiate 2G	7

R1 BOYS SECTION A	Team	Placing
	Aotea College 1B	1
	Onslow College 2B	1
	Naenae College 1B	3
	Whitby Collegiate 1B	4

R1 GIRLS SECTION A	Team	Placing
	Upper Hutt College 1G	1
	Wellington Girls College 5G	2
	Wellington Girls College 4G	3
	Paraparaumu College 2G	4

R1 BOYS SECTION B	Team	Placing
<b>Pool A</b>	Paraparaumu College 3B	1
	Onslow College 3B	2
	Upper Hutt College 1B	3
<b>Pool B</b>	Kapiti College 2B	1
	Raphael House 1B	2
	Wellington College 5B	3

R1 GIRLS SECTION B	Team	Placing
	Mana College 1G	1
	Onslow College 2G	2
	Queen Margaret College 2G	3
	St Oran's College 3G	4
	Newlands College 1G	5
	Kapiti College 2G	6

R2 GIRLS	Team	Placing
	Wellington Girls College 7G	1
	St Oran's College 4G	2
	Wellington East Girls College 3G	3
	Hutt Valley High School 2G	4
	Wellington Girls College 6G	5

# OPEN GRADE COMPETITION RESULTS 2020

The following are competition results in order as at the end of pool play, with final placings noted in the far right column.

Teams in bold and highlighted denote competition winners.

It was decided that there would be no promotion or relegation this season as a result of Covid.

P1 Men	Team	Played	Win	Draw	Loss	For	Against	Points	Final Placing
	<b>Dalefield 1M</b>	14	14	0	0	56	7	46	1
	Hutt United 1M	14	12	0	2	69	19	44	3
	Naenae 1M	14	9	0	5	34	30	28	4
	Harbour City 1M	14	9	0	5	28	39	27	2
	Victoria Uni 1M	14	4	1	9	15	37	13	5
	Northern United 1M	14	3	2	9	14	45	11	6
	Indians 1M	14	3	1	10	12	51	10	7

P1 Women	Team	Played	Win	Draw	Loss	For	Against	Points	Final Placing
	Hutt United 1W	14	13	0	1	71	14	43	2
	<b>Dalefield 1W</b>	14	12	0	2	80	10	43	1
	Harbour City 1W	14	11	0	3	63	16	39	3
	Northern United 1W	14	7	0	7	28	32	22	4
	Victoria Uni 1W	14	4	3	7	21	27	16	5
	Toa 1W	14	3	2	9	18	52	12	6
	Kapiti 1W	14	2	1	11	13	65	8	8
	Karori 1W	14	1	0	13	6	84	3	7

P2 Men	Team	Played	Win	Draw	Loss	For	Against	Points	Final Placing
	<b>Hutt United 2M</b>	14	13	0	1	35	15	40	1
	Tawa 2M	14	10	2	2	26	13	32	2
	Upper Hutt 2M	14	9	3	2	38	23	31	3
	Naenae 2M	14	6	0	8	25	33	19	4
	Harbour City 2M	14	5	1	8	29	44	17	6
	Northern United 2M	14	5	1	8	27	39	16	5
	Victoria Uni 2M	14	4	1	9	26	39	13	7

P2 Women	Team	Played	Win	Draw	Loss	For	Against	Points	Final Placing
	Kapiti 2W	15	11	2	2	40	19	36	2
	<b>Hutt United 2W</b>	15	9	3	3	38	24	31	1
	Victoria Uni 2W	15	8	3	4	28	19	27	3
	Victoria Uni 3W	15	3	5	7	23	32	14	4
	Upper Hutt 2W	15	2	4	9	21	37	10	6
	Harbour City 2W	15	2	3	10	17	36	9	5

R2/3 Men	Team	Played	Win	Draw	Loss	For	Against	Points	Final Placing
Top 5	<b>Indians 4M</b>	13	11	1	1	62	13	39	1
	Kapiti 3M	13	11	0	2	47	28	34	2
	Tawa Titans 3M	13	6	2	5	40	30	22	3
	Naenae 3M	13	6	2	5	37	37	21	5
	Upper Hutt 3M	13	6	1	6	34	35	20	4
Bottom 5	Kapiti 2M	13	6	4	3	33	27	23	2
	Naenae 4M	13	4	2	7	33	39	14	3
	YWPetone 2M	13	4	1	8	25	42	13	1
	YWPetone 3M	13	2	2	9	22	48	8	5
	Karori 3M	13	1	1	11	16	50	4	4

P3 Men	Team	Played	Win	Draw	Loss	For	Against	Points	Final Placing
	<b>Indians 3M</b>	14	8	3	3	47	33	29	1
	Victoria Uni 3M	14	8	2	4	44	29	27	2
	Kapiti 3M	14	7	3	4	38	27	25	4
	Karori 1M	14	5	6	3	36	31	22	3
	Harbour City 3M	14	5	3	6	29	42	18	5
	Victoria Uni 4M	14	4	2	8	28	37	15	7
	Hutt United 3M	14	3	5	6	25	36	14	6
	Northern United 3M	14	3	2	9	22	34	11	8

P3 Women	Team	Played	Win	Draw	Loss	For	Against	Points	Final Placing
	<b>Northern United 2W</b>	14	11	3	0	37	13	36	1
	Kapiti 4W	14	9	1	4	43	25	30	2
	Hutt United 3W	14	8	4	2	30	21	28	4
	Harbour City 3W	14	9	0	5	26	17	27	3
	Upper Hutt 2W	14	7	2	5	28	26	23	5
	Kapiti 3W	14	4	1	9	18	50	13	8
	Victoria Uni 4W	14	2	1	11	8	38	7	5

R1 Men	Team	Played	Win	Draw	Loss	For	Against	Points	Final Placing
	<b>Indians 3M</b>	14	11	2	1	57	16	39	2
	<b>Tawa 2M</b>	14	9	3	2	49	14	32	1
	Victoria Uni 2M	14	6	3	5	36	32	23	3
	Upper Hutt 2M	14	6	4	4	27	21	22	4
	YWPetone 1M	14	6	1	7	49	50	21	5
	Harbour City 4M	14	6	2	6	25	23	20	6
	Karori 2M	14	2	1	11	14	49	7	7
	Hutt United 4M	14	1	2	11	19	71	5	7

R1 Women	Team	Played	Win	Draw	Loss	For	Against	Points	Final Placing
	<b>Toa 2W</b>	14	10	2	2	63	17	38	1
	Indians 1W	14	11	1	2	41	13	35	2
	Tawa 1W	14	8	3	3	40	17	29	4
	YWPetone 1W	14	7	3	4	31	22	25	3
	Karori 2W	14	6	1	7	22	31	20	6
	Island Bay 1W	14	4	2	8	13	27	14	5
	Naenae 2W	14	2	3	9	18	41	9	7
	Victoria Uni 5W	14	0	1	13	14	74	1	8

R2/3 Men	Team	Played	Win	Draw	Loss	For	Against	Points	Final Placing
Top 5	<b>Indians 2W</b>	14	14	0	0	94	2	52	1
	Tawa Titans 2W	14	10	0	4	37	12	31	3
	Harbour City 4W	14	10	0	4	36	29	31	2
	Naenae 3W	14	9	0	5	24	26	28	4
	Waiuimata 1W	14	5	0	9	7	35	15	5
Bottom 4	Kapiti 5W	14	7	1	7	28	37	23	2
	Hutt United 4W	14	7	1	7	19	52	22	1
	Upper Hutt 3W	14	5	1	9	14	34	16	3
	Karori 3W	14	3	1	11	10	42	10	4



A COMMUNITY TO BE PROUD OF

# ACKNOWLEDGEMENTS

## National Honours

### National Squad

Stephen Jenness  
Dane Lett  
Jacob Smith  
Brad Read

## National Masters Honours

### National Squads - Women

#### *Women's 35's*

Ana Gudsell  
Marnie Taylor

#### *Women's 40's*

Daina Ratana  
Rachel Lilley  
Stephanie Weller  
Leah Murphy

#### *Women's 45's*

Vicki Collins

#### *Women's 50's*

Jackie Nuthall

#### *Women's 55's*

Louise Westerkamp

#### *Women's 60's*

Sue Call  
Di Jordan  
Clare MacMurray

### National Squads - Men

#### *Men's 35's*

Sam Valentine  
Robbie Burgess  
Ben Everist

#### *Men's 40's*

Andrew Martin  
Bruce Irwin  
Dave Murray  
Rahul Matson Govindan

### National Development Squads

Harry Miskimmin

#### *Men's 45's*

Aaron Murray  
Jason Perry  
Kelvin Giles  
Matt Hair  
Rob Bicknell

#### *Men's 50's*

Alan Register  
Chris Vautier  
Mark Wright  
Matthew Lawrence  
Michael Seymour  
Mike Waterman  
Murray Jones

#### *Men's 55's*

Jeff Sarjeant  
Mike Davis  
Prakash Jeram  
Richard Calkin

#### *Men's 60's*

Bill Miles  
Chuni Bhika  
Ed Rafferty  
Hus Bhikha  
Michael Hooper  
Nev Parker  
Rob Clay  
Sheldon Bruce  
Peter Thomas

# HOCKEY AWARDS 2020

## ***Wellington Hockey***

**Tom Fergusson Cup - Club of the Year:** WISC Junior Club

**MVP:** Todd Foster

**Community Coach of the Year:** Colette McKenzie (Wellington College 2nd XI/U13 Representative)

**Community Initiative of the Year:** Tawa Titans Club (Tawa Future Stars)

**Community Administrator of the Year:** Meena Vallabh (WISC)

**Community Volunteer of the Year:** Jane Hirst

**Community Official of the Year:** Josh McDougall

**WHA Special Award:** Wellington Girl's College 1st XI (CSW Girl's Team of the Year)

**WHA Governance Award:** Gareth Jeune (Tawa Hockey Club)

## ***Youth Representative***

**Most Improved Junior Umpire Male:** Gareth Lock

**Most Improved Junior Umpire Female:** Selina Akavi

## ***College Sport Wellington Awards***

**Hockey Players of the Year:**

***Girls:*** Sorita Pho (Wellington Girl's College)

***Boys:*** Angus Bowmar (HIBS)

**Girls Team of the Year:** Wellington Girl's College 1st XI



# ADMINISTRATION

## Patron and President

Derek Wilshere

## Life Members

Rosemary O'Brien

Ken Wood

Dr Rob McIlroy

Richard Taylor

Jan Borren

Margaret McPherson

Derek Wilshere

Keith Binnie

Dayle Jackson

Karen Wallace

## WHA Board

Sally Morrison (Chair)

Kyle Pontifex

Danella Rennie

Rochelle Roddick

John Thomason

Susannah Sharpe (Until March 2020)

Molly Powers

Gareth Jeune

Anna Rossiter-Stead (Aspiring Director)

Prabha Ravi

## Wellington Sport Legends

Jack Tynan (2007)

Trevor Manning (2008)

Alan McIntyre (2008)

Peter Miskimmin (2013)

Suzie Muirhead (2018)

## WRHST Trustees

Keith Binnie, Chair

John Bowmar

Emily Richards

Hamish Clentworth

Sam French

Brent Miskimmin

## Service Awards

Danella Rennie

Murray Down

Selwyn Waititi

Paddy Frankenberg

Louise Sanson

Warren Devereux

Daniel O'Connell

Mohan Parbhu

Bruce Manning

Rex Manning ONZM

Karen Wallace

## Hockey NZ Life Members

Derek Wilshere

Dayle Jackson

Keith Binnie

Rosemary O'Brien

Kevin Towns

## Staff

**Lisa Jones** - CEO

**Dane Lett** - Head of Hockey

**Bjorn Dix** - Development Officer

**Cat Gooding** - Community Hockey Officer

**Sue Parrott** - Admin and Finance

**Sandeep Choudhary** - Tournaments and Competitions

## Custodians

**Devendra Patel** - National Hockey Stadium

**Rebecca Noble** - Elsdon Park

**Pedro Garcia** - Maidstone Park

## HNZ Service Award Recipients 2020

Derek Wilshere

Kyle Pontifex

Danella Rennie

# ADVISORY COUNCILS

## Open Grade

Nicky Sherriff

Dave Jennings

Erin Muxlow

Mohan Parbhu

Andy Jensen

## Youth

Julie Schultz

Sue Gall

## High Performance

Brent Miskimmin

Peter Miskimmin

Suzie Muirhead

Mark Watson

Mike Chu

Niniwa Roberts

## Masters

Arthur Mahon

Neville Parker

Leah Murphy

Ben Everist

Vicki Collins

Ed Rafferty

Rachel Lilley

## Umpires

Warren Devereux

Stephen McLachlan

Nathan Waddle

Tom Rutherford

Jane Hirst

Nano Tunnicliff



Wellington Hockey Association Inc.  
**Performance Report**  
For the year ended 31 December 2020

	Page
Directory	3
Entity Information	4
Statement of Service Performance	5
Statement of Financial Performance	6
Statement of Financial Position	7
Statement of Cash Flows	8
Notes to the Performance Report	9-12
Independent Auditor's Report	13



**WELLINGTON HOCKEY ASSOCIATION INC.**  
2020 Performance Report

**Directory**

**Incorporation Number** WNIS 215403  
**Auditors** Kendons Chartered Accountants Limited  
**Chief Executive** Lisa Jones (from January 2020)  
**Accountants** Findex NZ Limited  
**Bankers** Bank of New Zealand  
**Solicitors** Gibson Sheat  
**Business Address**  
 Physical  
 National Hockey Stadium  
 Mount Albert Road  
 Newtown  
 Wellington, NZ  
**Postal**  
 PO Box 2891  
 Wellington, 6140

**WELLINGTON HOCKEY ASSOCIATION INC.**  
2020 Performance Report

**Entity Information**  
**For the year ended 31 December 2020**

**Legal Name of Entity:** Wellington Hockey Association Inc  
**Type of Entity and Legal Basis (if any):** Wellington Hockey Association Inc is an Incorporated Society registered under the Incorporated Societies Act 1908  
**Incorporated Society Registration Number:** WNIS 215403  
**Date of Incorporation:** 17 April 1913  
**Wellington Hockey Association's Purpose / Mission:**  
*Vision Statement*  
 Inspiring a life-long love of Hockey  
*Our Mission*  
 Making great hockey happen

**Entity Structure**

The Wellington Hockey Association ("the Association") is an incorporated society and is an association of the New Zealand Hockey Federation, charged with developing, delivering and growing hockey in the greater Wellington region.

The Association is governed by a Board of Directors comprising of 7 members. In addition, the President, the Chair or a Trustee of the Wellington Region Hockey Stadium Trust and the Chief Executive attend all board meetings.

The members of the governing body are as follows:

- Sally Morrison, Chair (appointed August 2018)
- Kyle Pontifex, Deputy Chair (elected April 2018)
- Danella Rennie (elected March 2016)
- Rochelle Roddick (co-opted Nov 2018, then appointed March 2019)
- John Thomson (appointed March 2019)
- Molly Powers (appointed March 2020)
- Suzannah Sharp (resigned March 2020)
- Prabha Ravi (appointed October 2020)
- Gareth Juene (resigned December 2020)
- Anna Rossiter-Stead (Aspiring Director and Intern, resigned December 2020)

The Board must meet at least six times a year.

**Main sources of the Entity's cash and resources & main methods used to raise funds**

- Fees and Subscriptions
- Grants and Sponsorship
- Facilities Income

**The Entity's reliance on volunteers and donated goods & services**

Wellington Hockey Association relies on volunteers for umpiring, coaching and providing support at events at the National Hockey Stadium and its other locations. Wellington Hockey also uses advisory groups that are made up of volunteers for areas of speciality regarding the sport of hockey.

WELLINGTON HOCKEY ASSOCIATION INC.  
2020 Performance Report

Statement of Service Performance  
For the year ended 31 December 2020

Description of the Entity's Outcomes

Key strategic objectives and outcomes Wellington Hockey Association aims to achieve, influence and deliver include:

- *More people enjoying the whole hockey experience for longer*
- *Opportunities for all to participate, grow and excel*
- *Strong and sustainable hockey in Wellington*
- *A modern, technology-enabled, innovative and customer-focused organisation*

Outputs and measures of quality and objectives in respect to delivery	Actual this year	Actual last year
Coaches and Umpires involved in workshops	0*	375
Growth in Winter membership	-8%	-11%
More participants involved in Wellington Hockey Programmes	6,761	4,792
20% of NZ U21's come from the Wellington region	0%*	11%
20% of NZ U18's come from the Wellington region	0%*	9%
20% of NZ Blacksticks come from the Wellington region	12%	14%
Wellington teams winning (top 4 placings)	0%*	50%
Growth in Sponsorship and Funding income	-24%	18%

Figures denoted with (\*) are as a result of the impacts of COVID-19 on Wellington Hockey Association's activities.

WELLINGTON HOCKEY ASSOCIATION INC.  
2020 Performance Report

Statement of Financial Performance  
For the year ended 31 December 2020

	Notes	2020	2019
<b>Income</b>		\$	\$
Affiliation Fees		210,293	285,619
Capital High Performance		10,000	206,700
Representative		52,845	131,717
Sponsorship/Grants	3	356,994	352,629
Events/Competition		243,856	137,656
Community Hockey		55,635	73,681
Other Income		3,739	40,330
Facilities Income	10	132,531	403,832
<b>Total Income</b>		1,065,892	1,612,164
<b>Less: Direct Expenses</b>			
Direct Expenses			91,151
Affiliation Fees HNZ		30,281	143,001
Capital High Performance			144,940
Representative		35,641	100,437
Events/Competitions		46,583	45,382
Community Hockey		41,686	141,659
Facilities		114,164	28,491
Other Direct Expenses		2,225	
<b>Total Direct Expenses</b>		270,581	695,061
<b>Gross Surplus</b>		795,312	917,103
<b>Less: Expenses</b>			
Audit Fee		10,067	12,571
Insurance, Finance & Banking		31,811	65,768
Interest Expense		-	4,427
Meeting & Conference Expenses		2,881	6,173
Office Costs		34,171	71,972
Salaries & Wages		418,750	378,026
Vehicle Expenses		4,902	4,651
WHRST		223,923	189,432
Other Expenses		-	1,907
<b>Total Expenses</b>		726,506	734,927
<b>Net Surplus / (Deficit) for the year</b>		68,806	182,176

These financial statements should be read in conjunction with the statement of accounting policies & the notes to the performance report.

WELLINGTON HOCKEY ASSOCIATION INC.  
2020 Performance Report

Statement of Financial Position  
As at 31 December 2020

	Notes	2020	2019
<b>Current Assets</b>		\$	\$
Cash at Bank		100,358	206,897
Prepayments		36,894	41,458
Accounts Receivable		6,588	19,747
Goods & Services Tax		31,543	49,081
Inventory		5,550	7,775
<b>Total Current Assets</b>		<u>180,932</u>	<u>324,958</u>
<b>Total Fixed Assets</b>	2	<u>74,222</u>	<u>92,717</u>
<b>Current Liabilities</b>			
Bank Overdraft		-	-
Revenue Received in Advance		32,783	304
Accounts Payable	4	48,440	320,206
Employee costs payable		13,706	11,625
Funds on Behalf		891	
Accruals		15,000	10,014
<b>Total Current Liabilities</b>		<u>110,821</u>	<u>342,149</u>
<b>Net Assets</b>		<u>144,333</u>	<u>75,527</u>
<b>Equity and Accumulated Funds</b>	11	<u>144,333</u>	<u>75,527</u>

For and on behalf of the Board

 Chairperson  
 Board Member

23 March 2021 Date

These financial statements should be read in conjunction with the statement of accounting policies & the notes to the performance report.

WELLINGTON HOCKEY ASSOCIATION INC.  
2020 Performance Report

Statement of Cash Flows  
For the year ended 31 December 2020

	Notes	2020	2019
<b>Cash Flows from Operating Activities</b>		\$	\$
<i>Cash was received from:</i>			
Participant Income		501,263	885,891
Grants and Sponsorship		259,917	247,865
Facilities		350,610	382,208
Interest Received		170	41
Other Income		1,250	0
<i>Cash was applied to</i>			
Facilities		(172,418)	(133,360)
Programmes, Events and Competitions		(64,991)	(170,851)
Representative		(98,650)	(375,665)
Administration		(882,026)	(561,121)
<b>Net cash flow from operating activities</b>		<u>(104,876)</u>	<u>275,009</u>
<b>Cash Flows from investing and financing activities</b>			
<i>Cash was applied to:</i>			
Property, Plant and Equipment		(1,664)	(6,386)
<b>Net Cash Flow from Investing and Financing Activities</b>		<u>(1,664)</u>	<u>(6,386)</u>
<b>Net Increase / Decrease in Cash</b>		<u>(106,538)</u>	<u>268,623</u>
Opening Cash		206,897	(61,726)
Closing Cash		<u>100,359</u>	<u>206,897</u>
<b>This is represented by:</b>		<u>100,358</u>	<u>206,897</u>
Bank / (Bank Overdraft)			

These financial statements should be read in conjunction with the statement of accounting policies & the notes to the performance report.

**WELLINGTON HOCKEY ASSOCIATION INC.**  
2020 Performance Report

**Notes to the Financial Statements**  
**For the year ended 31 December 2020**

**Note 1 -** **Statement of Accounting Policies**

**Reporting Entity**

The Wellington Hockey Association Inc is a not-for-profit organisation registered under the Incorporated Societies Act 1908.

**Reporting Basis**

Wellington Hockey has elected to apply Public Benefit Entity Simple Format Reporting - Accrual (not-for-profit) on the basis that it does not have public accountability and has total annual expenses of equal to or less than \$2,000,000. All transactions in the performance report are reported using the accrual basis of accounting.

**Going Concern**

The financial statements have been prepared on a going concern basis, which assumes the Association will continue to operate in the foreseeable future and will have sufficient cash to pay its debts, as and when they become payable, for a period of at least 12 months from the date the performance report was authorised for issue.

As at 31 December 2020, the Association had net assets of \$144,333 (2019: net assets of \$75,527). The Board expects that net cash inflows from the Association's operating activities will be sufficient to meet the Association's liabilities. This is further supported by post balance date performance & forecasted performance information.

As such, the Board considers it is appropriate to prepare the financial statements on the going concern basis.

**Affiliation Revenue**

Affiliation fees are recognised in the financial statements when they are invoiced. However, they are collected over a two month payment plan. For senior clubs, this means that 30% are due by May, and the balance is due in June each year.

For junior clubs and schools, the invoice is sent upon registration, usually in early May each year and the full invoice is due by June each year.

**Affiliation Expense**

Affiliation fees are payable to Hockey New Zealand. The affiliation is invoiced in two parts, from July - December of the financial year invoiced on 31 December and January - June invoiced on the 1st of January for that year.

**Measurement Base**

The measurement base adopted is historical cost.

**Accounts Receivable**

Accounts receivable are stated at expected realisable value.

**Sponsorship**

Sponsorship income is recognised in full in the year it is received. Sponsorship of goods and services is stated at market value.

**Facilities Revenue**

Facilities revenue is recognised as revenue once the event associated with the revenue has taken place.

**Capital High Performance**

Capital High Performance income is recognised as revenue when received.

**Representative Revenue**

Representative revenue is recognised as revenue when received.

**Community Hockey Events/Competition**

Community Hockey Events/Competition is recognised as revenue when received.

**Fixed Assets**

Fixed assets are stated at cost less accumulated depreciation.

**WELLINGTON HOCKEY ASSOCIATION INC.**  
2020 Performance Report

**Note 1 - Continued**

**Depreciation** is charged at the maximum rates allowable by the Inland Revenue Department. The rates applied are as follows:

Coaching Equipment	25% - 28.8%	DV & SL
Computer Equipment	36% - 60%	DV & SL
Trophies	33.3%	DV
Office Equipment	10% - 50%	DV & SL
Uniforms	33.3% - 60%	DV & SL
Motor Vehicle	26%	DV
NHS Facilities	5% - 25%	DV & SL

**Goods and Services Tax**

The financial statements have been prepared using GST exclusive figures, except for Accounts Receivable, Accounts Payable and the Statement of Cash Flows which are stated inclusive of GST. Wellington Hockey Association Incorporated is GST registered.

**Inventory**

Merchandise is stated at the lower of cost and net realisable value. Cost is calculated using the first in, first out basis.

**Income Tax**

The Association is exempt from taxation under section CW46 of the Income Tax Act 2007.

**Grant Income**

Grant Income is recorded in the year the Grant relates to. Grant Income received relating to future periods is recorded as income in advance on a pro rata basis over the period which the Grant relates to, provided there is a use or return condition attached to the grant.

**Changes in Accounting Policies**

There have been no changes in accounting policies. All policies have been applied on a basis consistent with those used in prior years.

**Note 2 - Fixed Assets**

Asset Class	Opening carrying amount	Purchases	Disposals	Sales / depreciation and impairment	Current year carrying amount	Closing carrying amount
Coaching and Ground Equipment	260			65	196	196
Computer Equipment	1,976	1,447		1,949	1,474	1,474
Trophies	41			13	27	27
Office Equipment	6,779	2,542		2,565	1,672	1,672
Uniforms	4,881			2,989	1,892	1,892
Vehicle	5,319			1,383	3,936	3,936
NHS Facilities	73,463	192	192	8,244	65,026	65,026
	92,718	1,447	2,734	17,208	74,223	74,223

**Note 7 - Letter of Credit**

Wellington Hockey Association has a letter of credit in favour of Payroll for the amount \$20,000.

**Note 8 - Credit Card**

The BNZ Business Visa has a limit of \$20,000 with \$2,758 utilised as at 31 December 2020. (2019: Nil)

**Note 9 - Related Parties**

The Facilities Management Contact between Wellington Hockey Association and Wellington Region Hockey Stadium Trust came into full effect in 2014. This resulted in Wellington Hockey taking over all the operational activities for the Trust including receiving turf fee income and paying all maintenance costs associated with the upkeep of the hockey facilities in Wellington. As a result of this arrangement, Wellington Hockey pays the Trust an annual management fee to cover the Trust's costs as well as a Capital contribution to ensure the growth and development of hockey facilities in Wellington.

Rochelle Roddick is a board member of Wellington Hockey Association, and a shareholder and employee of Findev, an accounting firm which provides financial services to Wellington Hockey Association. During the year Wellington Hockey Association incurred costs of \$5,100 relating to accounting assistance from Findev.

**Note 10 - Facilities Income**

Facilities income is made up of turf fee income \$121,310 (2019: \$381,934), catering lease \$7,838 (2019: \$12,896) and other \$3,383 (2019: \$9,000). Turf fees are invoiced on a monthly basis in arrears and are due on the 20th of the month following the turf usage.

**Note 11 - Equity & Accumulated Funds**

Accumulated Funds	2020	2019
	\$	\$
Plus: Net Surplus / (Deficit) for the Year	75,527	(106,648)
Total Equity	68,806	182,176
	144,333	75,527

**Note 12 - Subsequent Events**

The Board of the Association is not aware of any events after balance date that have significant or may significantly affect the operations of the Association.

**Note 13 - COVID-19**

The spread of COVID-19 continues to disrupt the business and economic activity throughout New Zealand and the world. The Board of Directors will continue to monitor the impact of COVID-19 on the Society. Should this public health emergency continue for a prolonged period of time, such as the occurrence of another lockdown, there is a potential adverse impact on the Society's operations and financial performance. Regardless, the Board of Directors maintain the view that the Society will continue to operate as a going concern.

**Note 3 - Grants**

Asset Class	Opening carrying amount	Purchases	Disposals	Sales / depreciation and impairment	Current year carrying amount	Closing carrying amount
Coaching and Ground Equipment	1,566		1,014	291	260	260
Computer Equipment	5,387		4,011	1,976	1,376	1,376
Trophies	41		20	156	670	670
Office Equipment	1,857	6,386		1,567	6,341	4,881
Uniforms	13,987	2,765		1,869	5,319	5,319
Vehicle	7,188			10,073	73,463	73,463
NHS Facilities	85,160	6,386	5,403	24,170	92,718	92,718
	115,905	6,386	5,403	24,170	92,718	92,718

**Note 3 - Grants**

Grants Received	2020	2019
Grants	\$	\$
Salary Contributions	314,735	258,657
Sponsorship	14,500	25,000
Total Sponsorship/Grants	27,759	68,972
	356,994	352,629

**Note 4 - Revenue received in advance**

	2020	2019
NZCT	\$	\$
Other	32,783	304
Total	32,783	304

**Note 5 - Statement of Commitments**

Wellington Hockey Association are committed to making two payments to the Wellington Regional Hockey Stadium Trust each year until the contract expires on 31 December 2022. The two payments are a capital contribution and a management fee that is variable depending on the Trust's operational costs until the expiry of the contract. The capital contribution for 2020 was nil, (2019: \$25,000) and the management fee was \$223,923 (2019: \$164,432).

Actual	2021	2022
Capital Contribution	75,000	75,000
Management Fee	223,923	209,370

**Note 6 - Statement of Contingent Liabilities**

There are no contingent liabilities that could have an impact on the future activities of the Association. (2019: Nil)




## Independent auditor's report

### To the Members of Wellington Hockey Association Incorporated

#### Opinion

We have audited the accompanying performance report of Wellington Hockey Association Incorporated on pages 4 to 12, which comprises the entity information, the statement of service performance, the statement of financial performance and statement of cash flows for the year ended 31 December 2020, the statement of financial position as at 31 December 2020, and the statement of accounting policies and notes to the performance report.

In our opinion the accompanying performance report presents fairly, in all material respects:

-  the entity information as at 31 December 2020
-  the financial position of Wellington Hockey Association Incorporated as at 31 December 2020, and its financial performance, and its cashflows for the year then ended; and
-  the service performance for the year ended 31 December 2020 in accordance with the entity's service performance criteria in accordance with Public Benefit Entity Simple Format Reporting – Accrual (Not-For-Profit) issued by the New Zealand Accounting Standards Board.

#### Basis for Opinion

We conducted our audit of the statement of financial performance, statement of financial position, statement of cash flows, statement of accounting policies and notes to the performance report in accordance with International Standards on Auditing (New Zealand) (ISAs (NZ)) and the audit of the entity information and service performance information in accordance with the ISAs and New Zealand Auditing Standard (NZ AS) 1 *The Audit of Service Performance Information (NZ)*. Our responsibilities under those standards are further described in the *Auditor's responsibilities for the audit of the performance report* section of our report.

We are independent of the Wellington Hockey Association Incorporated in accordance with Professional and Ethical Standard 1 *International Code of Ethics for Assurance Practitioners (including International Independence Standards) (New Zealand)* issued by the New Zealand Auditing and Assurance Standards Board, and we have fulfilled our other ethical responsibilities in accordance with these requirements.

We believe that the audit evidence we have obtained is sufficient and appropriate to provide a basis for our opinion.

Other than our capacity as auditor we have no relationship with, or interests in, Wellington Hockey Association Incorporated.

#### Other information

The Board are responsible for the other information. The other information comprises the information included in the directory on page 3, but does not include the financial statements, entity information and statement of service performance, and our auditor's report thereon.

Our opinion on the performance report does not cover the other information and we do not express any form of audit opinion or assurance conclusion thereon.

adding value to business

04 566 4399 ● 69 Rutherford St ● PO Box 31045 ● Lower Hutt 5040 ● [www.kendons.co.nz](http://www.kendons.co.nz)

In connection with our audit of the performance report, our responsibility is to read the other Information and, in doing so, consider whether the other information is materially inconsistent with the performance report or our knowledge obtained in the audit or otherwise appears to be materially misstated. If, based on the work we have performed, we conclude that there is a material misstatement of this other information, we are required to report that fact. We have nothing to report in this regard.

### **Responsibilities of the Board members for the performance report**

The Board members are responsible on behalf of the entity for:

- a) the preparation and fair presentation of the entity information, the statement of service performance, the statement of financial performance and statement of cash flows in accordance with Public Benefit Entity Simple Format Reporting – Accrual (Not-for-profit) issued by the New Zealand Accounting Standards Board;
- b) service performance criteria that are suitable in order to prepare service performance information in accordance with Public Benefit Entity Simple Format Reporting – Accrual (Not-for-profit); and
- c) such internal control as the Board members determine is necessary to enable the preparation of a performance report that is free from material misstatement, whether due to fraud or error.

In preparing the performance report, the Board members are responsible on behalf of Wellington Hockey Association Incorporated's for assessing Wellington Hockey Association Incorporated's ability to continue as a going concern, disclosing, as applicable, matters related to going concern and using the going concern basis of accounting unless the Board members either intend to liquidate Wellington Hockey Association Incorporated or to cease operations, or have no realistic alternative but to do so.

### **Auditor's responsibilities for the audit of the performance report**

Our objectives are to obtain reasonable assurance about whether the performance report as a whole is free from material misstatement, whether due to fraud or error, and to issue an auditor's report that includes our opinion. Reasonable assurance is a high level of assurance, but is not a guarantee that an audit conducted in accordance with ISAs (NZ) and NZ AS 1 will always detect a material misstatement when it exists. Misstatements can arise from fraud or error and are considered material if, individually or in the aggregate or collectively, they could reasonably be expected to influence the decisions of users taken on the basis of this performance report.

A further description of the auditor's responsibilities for the audit of the performance report is located at the XRB's website at

<https://www.xrb.govt.nz/assurance-standards/auditors-responsibilities/audit-report-18/>

This report is made solely to the members of Wellington Hockey Association Incorporated. Our audit has been undertaken so that we might state to the members those matters we are required to state to them in an auditors' report and for no other purpose. To the fullest extent permitted by law, we do not accept or assume responsibility to anyone other than the members, for our audit work, for this report, or for the opinions we have formed.



### **Kendons Chartered Accountants Limited**

Michael Markham • Director

Qualified Auditors • Lower Hutt • New Zealand

23 March 2021



**WELLINGTON HOCKEY ASSOCIATION**

**9 MT ALBERT ROAD**

**P.O. BOX 2891**

**BERHAMPORE**

**WELLINGTON 6140**

**PHONE: 04 389 3337**

**EMAIL: [info@wellingtonhockey.org.nz](mailto:info@wellingtonhockey.org.nz)**

**[www.wellingtonhockey.org.nz](http://www.wellingtonhockey.org.nz)**

**Social Media - [@wgtnhockey](https://www.instagram.com/wgtnhockey)**