

Nov 2010



Wellington Hockey Association

Newsletter 6

Black Sticks' Coaches here soon

Summer Holiday Programmes - get involved!

Want to be coached by Black Sticks' coaches Mark Hager and Shane Mcleod this summer? Then you had better get involved in our summer programme! Mark will be here for the Junior Camp in December and Shane will be working with the Elite Clinic players in the new year as well as working with the Wellington Academy players this month.

The summer programme is led by Sean Dancer, Assistant Coach of the Black Sticks men - and there are some great coaches also on board (including Stephen Jenness and Kyle Pontifex.).

Future Sticks (5 - 9 yrs)
18 & 19 Dec or 20 & 21 January
3-day Summer Camps
Under 11 and Under 13 combined;
20 - 22 Dec or 17 - 19 Jan
Under 15 and Under 18 combined;
15 - 17 Dec or 25 - 27 Jan
Elite Clinic - 6 week programme
31 Jan - 11 March



The full 2010 / 2011 programme details and registration forms are available on the [WHA website](#).

NB Any proceeds from these programmes go to the further development of young hockey players in Wellington.

2011 Summer League 6-a-side

Summer hockey is a fun way to spend an evening. Played on a half field at Elsdon, Fraser and the National Hockey Stadium - there are lots of choices and opportunities for players of all levels.

Starts 25 January running for 6 weeks

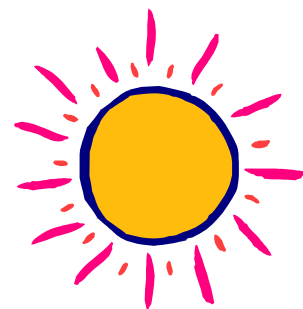
- Premier Men - Tuesday, NHS - experienced Premier Hockey Players only
- Premier Women - Tuesday, NHS - experienced Premier Hockey Players only
- Business Mixed - Monday, NHS
- Business Mixed - Wednesday, NHS
- Business Mixed - Monday, Fraser
- Business Mixed - Thursday, Fraser
- Business Mixed - Wednesday, Elsdon

6-a-side entry fees for 2011 are \$300

Entries close

10 January

Go to the [WHA website](#) for details and an entry form.



Dates for your diary:

- 21 November - Masters Representative Trials (men and women - ages 35+)
- 18, 19 December - Future Sticks Holiday Programme
- 15 - 17 December - Senior Camp Holiday Programme
- 20 - 22 December - Junior Camp Holiday Programme
- 24 January - Summer 6-a-side competitions start - registrations close 10 Jan

Details for all these activities can be found online at www.wellingtonhockey.org.nz

Note from the Chief Executive

Well its November already! Thankfully the sunshine has returned to Wellington of late and we can remind ourselves what a great place we live in (without relying on Lonely Planet to tell us this fact). Hopefully the good weather will continue as Tiger Turf have been awarded the contract to replace the number 1 pitch at the National Hockey Stadium and will start ripping the turf up in the next couple of weeks. The plan is to have a new turf ready to go by 20 January! We are rather reliant on good weather helping this project keep to time - long may it last.

Tiger Turf were responsible for laying the turfs at North Harbour (and other venues around New Zealand and even Australia) - so we look forward to seeing this project unfold. Keep an eye on our website and Facebook Page for photos of the progress. Hopefully Wellington City Council will also be contracting Tiger Turf to do some repairs on our number 2 turf at the National Hockey Stadium. In its 8th year, the turf is starting to see the seams deteriorate and some urgent repair is required before it **gets too bad. We certainly don't want the same thing to happen to number 2 as happened with the number 1 pitch.**

Yes - we have a Facebook Page now - [WHA Facebook Page](#) Go to this page - **and select 'Like' to get our page added** to your own Facebook profile. We will use this page to send out updates, store photos etc. For those of you who have **already noted WHA as a 'friend'** - please do go to the actual Page itself as this is where we are adding our updates photos, events etc (not through our profile).

We often get asked what WHA staff do in the summer season? Many assume we only work in the winter season, **however while the phones don't go as often in summer as they do in the winter**, we still have a lot happening. Sean is working on his summer programme of camps, clinics and the Wellington Academy as well as further developing our High Performance programme; Donna is keeping the summer 6-a-side competition running, getting the Rep uniforms audited ready for 2011 and putting information together for our Annual Report; Sandra is getting the Rep team accounts finalised for the year, chasing up unpaid accounts (you know who you are! ☺), getting the finances ready for our audit which begins in December and both she and Donna are already getting flights and accommodation **sorted for next year's Rep tournaments. Nin is currently running** some coaching development courses, finalising her coaching programme for 2011 and managing the Rep coach appointments **process for 2011. For those of you who aren't aware** - Nin will be heading off on maternity leave in early 2011. We will ensure there is someone appointed to continue on her coaching programme and of course take this opportunity to wish her all **the very best for her baby's arrival! As for me, 2011 Operational Planning, the 2010 Annual Report and the 2010 financial audit** are some of my priorities at present. I am also in Hamilton at the end of next week to attend the Hockey New Zealand Leaders Conference.

Hockey New Zealand's **'Whole of Hockey Business Plan'** will be a key point of discussion at the conference - there are some exciting ideas noted in the plans and hopefully will have benefit to a great number of our own community in Wellington. Part of the plan will see Wellington Hockey Association act as a service centre for the Capital Region (which you will remember is the Buller, Marlborough, Nelson, Wellington and Wairarapa Associations) with Talent ID and Talent Development throughout the region being a key element of our work. We are meeting with the other Capital Associations in early December to discuss our possible next steps. Key in all this however is to ensure we continue to look after our local players and competitions as our first priority. In this respect, clubs and schools have been asked to complete an end of year survey to provide feedback on the work of the Association. We will run this survey every year, ideally seeing an improved level of satisfaction each time! Club and School contacts - please do complete the survey - your feedback is incredibly important to us.

Finally I had the great pleasure of attending the WHA Youth Prize Giving (see below photos) and the College Sport Prize Giving ceremonies. What a joy it is to see our young athletes achieving so much!

Happy summer everyone,
Best wishes,
Anne-Margaret



Recent successes for Wellington Hockey

Thanks very much to Stephen Jenness for this photo of all our **Wellington 'boys' at the Commonwealth Games** - back L to R - Blair Tarrant, Stephen Jenness, Blair Hilton, Phil Burrows, Sean Dancer with Kyle Pontifex in front.



Shane McLeod has recently announced his Black Sticks squads for 2011 and we are delighted to note that following his great **success with the Junior Black Sticks and the Capital men's NHL** team, Alex Schroder has been added to the New Zealand Development squad while the above players along with Joel Baker and Anita Punt retain their place in the Black Sticks squads. This is a tremendous achievement for all these players and we are so proud to be able to support their hockey where we can.



Congratulations to Maddy Simmonds (pictured) and Anna Brow for their winning of the **'Student Award' for the 2010 SPARC Volunteer Coach** awards. Wellington Hockey Association was thrilled to be there and see their great coaching work at Samuel Marsden rewarded. In addition we had a total 5 great hockey people shortlisted for the awards from a total of 13 from all sports in the region (the other 3 being Selina Duggan, Dayle Jackson and Adam Parsons) A great achievement and recognition for our coaches and we sincerely thank those people/schools/clubs who nominated their coaches for these awards.

Congratulations to Kate McCaw (pictured) and Conor Gilchrist for their winning of the 2010 College Sportsman Awards for Hockey. Kate was also shortlisted for the Premier award - a great achievement and a wonderful year for both these players. Most recently they were included in the New Zealand Academy teams to compete against the Queensland teams. Kate as noted in previous newsletters had a most wonderful year through being a member of the New Zealand Youth Olympic Hockey Team, gaining a bronze medal along the way. We also congratulate Anita Chandler, Alex Tully, Billy Miskimmin and Kevin Bellman for being shortlisted for the College Sport Hockey awards.



Let us not forget the combined success of our Under 11 and Under 13b Rep teams this year - with so much silverware brought in for the Youth Prize giving we had to get another table out to display it all. Five of the 6 teams had a first placing at their regional tournament! The 6th team came second. A really wonderful achievement for all these players, coaches, managers and supporters - **congratulations!** (NB we can't put all the team photos up - but this was one of our favourites just proving what a very wet but great season we have had!).

And finally, we are incredibly proud of the tremendous Capital **men's team, winners of the National Hockey League!**





Wellington Hockey
Association

9 Mt Albert Road
(PO Box 2891)
Berhampore
Wellington
Ph. 04 389 3337
Fax 04 389 3130

www.wellingtonhockey.org.nz
info@wellingtonhockey.org.nz

Making great hockey happen

Wellington Hockey Association is proud to receive support from the following funders and sponsors:



2010 Competition Review Meetings

We had 3 end of season meetings to talk through any possible changes to the Handbooks for our 2011 competitions as well as looking at the likely calendar for 2011. A very late Easter along with the change of school holidays due to the Rugby World Cup make the winter season difficult to finish in early September. In addition, we are hosting the National Hockey League mid-season which definitely adds to a complicated calendar (with the dates for this still not finalised).

As a result of these meetings the following competition start dates were agreed (NB Premier One Open Grade may change depending on the final dates for National Hockey League):

- All Open Grade - 26 March
- Secondary - Challenge Week w/b 11 April ; Round 1 Grading games w/b 2 May
- Primary - Round 1 starts 7 May
- Mini - Round 1 starts 14 May

It was agreed we would trial a reduced grading round in 2011 for the Secondary competition (now 5 weeks rather than 7). This is in part to reduce the lengthy grading round, but also to ensure we can fit the season

in without going too far into September. The grading round format will be the same as used for Open Grade competition in 2010.

A common theme for all meetings was how to better manage deferrals which create headaches for all involved. For Primary, there will be no deferrals allowed in 2011. As a result, for the Premier One competition, when the Blenheim Quadrangular tournament is held there will be no P1 competition that weekend. In Secondary, requests for deferrals for non-Representative commitments must be in prior to the draw being generated. In Open Grade, deferrals will no longer be granted for Under 18 Representative commitments - only Under 21 and NHL (in recognition of this being a senior competition). It is also proposed the top 4 teams in P2 competition are eligible to challenge for promotion to P1 (currently teams must finish in the top 3). This resolves the issue surrounding the final 3 v 4 final game not being played and is consistent with the rules that competition points will be the deciding factor in final rankings (not semi finals, finals).

Thanks very much for all those who contributed to the very positive discussions that arose at these meetings- we very much enjoyed them.

Masters Trials

(for all ages 35+ Men and Women)

Trials for the 2011 Wellington Masters Teams will take place on Sunday 21 November - go to the [website](#) for further details

The Poms are coming!

The Royal Logistics Corp will be here on Wednesday 17 November competing against two invitation **Wellington Masters men's and women's teams. The men's game starts at 6pm with the women's game following it at 7.30pm.**