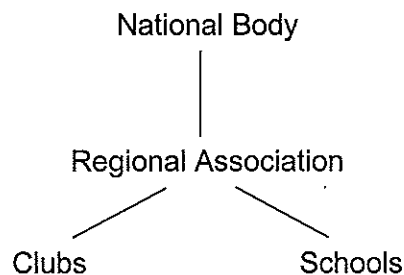


# Memorandum

**Date:** 13 March 2008  
**To:** Associations  
**From:** Dana Bisset, Events & Promotions Manager  
**RE:** ELIGIBILITY RULES

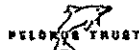
With 2008 National Tournaments fast approaching, we provide an outline on eligibility rules as a reminder to all Associations:

## Hockey New Zealand – Infrastructure



- **Clubs may only be affiliated with one Association**
- **Schools may only be affiliated with one Association**  
This is normally with the Association whose boundary encompasses the school.
- **Clubs may only play in one club competition**  
Normally this is within their Association. It is possible that two or more Associations agree to play a club competition involving two or more of these Associations either for a full season or part of a season.
- **Schools may only play in one school competition**  
Normally this is within their Association. It is possible that two or more Associations agree to play a school competition involving two or more of these Associations either for a full season or part of a season.
- **A player is registered with the Association to which his/her club is affiliated**
- **A player may only belong to one club at a time**

We are pleased to acknowledge the support of:



- **Player who plays club hockey in one Association and school hockey in another**  
A school player may play in the school competition in one Association and club competition in another Association. Consequently the player is then registered with the Association to which his/her club team is affiliated.

Exception

Only at the written mutual consent of both Associations involved, may a school player playing in a school competition in one Association and club competition in another Association, play representative hockey for the Association to which his/her school team is affiliated.

- **A player whose club/school team is affiliated to one Association but plays in the club/school competition of another Association**

In some instances, club/school teams are affiliated to one Association but play in another Association's school/club competition. (Club/school teams wishing to play in another Association's competition must seek permission from both Associations involved). Consequently the players are still registered with the Association to which his/her club/school team is affiliated and are not entitled to play representative hockey for the Association where they play their club/school hockey.

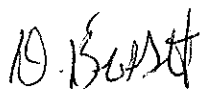
Exception

Associations who do not have representative teams and do not run club/school competitions in their Association must allow their players to represent the Association where their clubs and schools play their hockey.

- **Province of Origin Ruling**  
See Tournament Rules on Hockey NZ's website
- **Guest Player Ruling**  
Only applies for National U18 Tournaments and upwards. See Tournament Rules.

If you require further clarification, please do not hesitate to contact me.

Kind regards



**Dana Bisset**  
**Events & Promotions Manager**